

Sample Name : Arg-Gly-Asp-Ser
 Cat. No. : RP10861
 Lot. No. : PE4861812
 Time Processed :8:44:08
 Month-Day-Year Processed :01/03/2019

Pump A : 0.065% trifluoroacetic in 100% water (v/v)
 Pump B : 0.05% trifluoroacetic in 100% acetonitrile (v/v)
 Total Flow:1 ml/min
 Wavelength:220 nm

| Time | Unit | Command | Value | Comment |
|-------|------------|---------------|-------|---------|
| 0.01 | Pumps | Pump A B.Conc | 0 | |
| 5.00 | Pumps | Pump A B.Conc | 0 | |
| 20.00 | Pumps | Pump A B.Conc | 30 | |
| 25.00 | Pumps | Pump A B.Conc | 65 | |
| 25.01 | Pumps | Pump A B.Conc | 95 | |
| 31.00 | Pumps | Pump A B.Conc | 95 | |
| 31.01 | Pumps | Pump A B.Conc | 0 | |
| 40.00 | Pumps | Pump A B.Conc | 0 | |
| 40.01 | Controller | Stop | | |

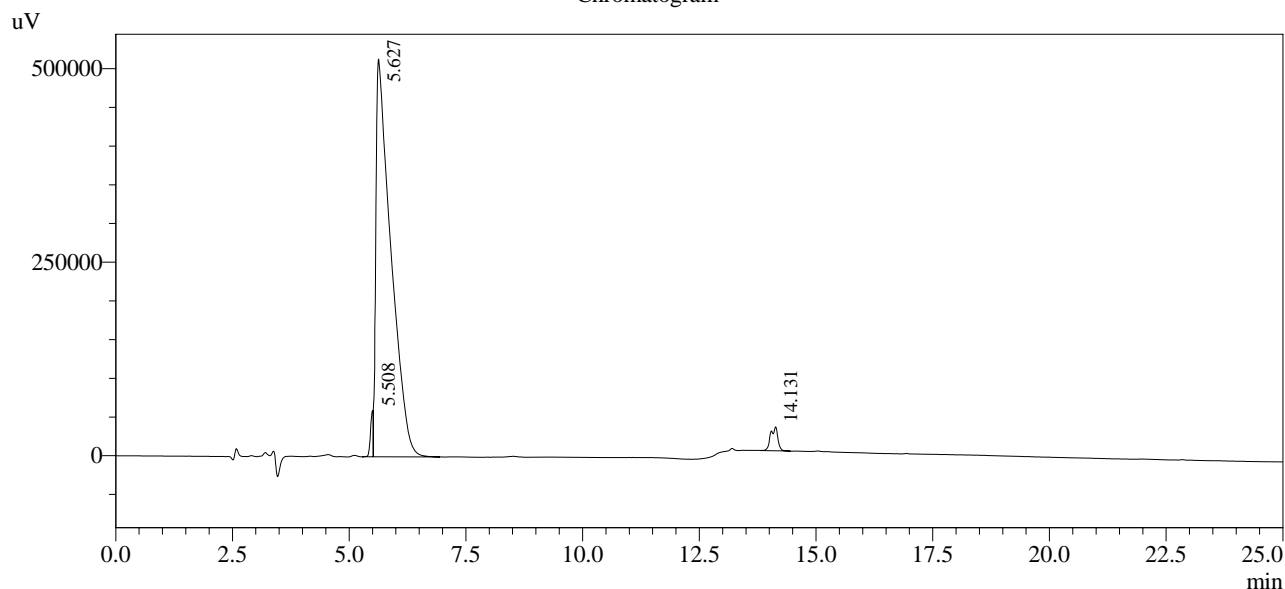
<<Column Performance>>

<Detector A>

Column : Inertsil ODS-3 4.6 x 250 mm

Equipment: GK11010009

Chromatogram



1 Det.A Ch1 / 220nm

Peak Table

Detector A Ch1 220nm

| Peak# | Ret. Time | Area | Height | Area % |
|-------|-----------|----------|--------|---------|
| 1 | 5.508 | 250435 | 60028 | 2.083 |
| 2 | 5.627 | 11444677 | 513905 | 95.204 |
| 3 | 14.131 | 326154 | 30833 | 2.713 |
| Total | | 12021267 | 604766 | 100.000 |