

Sample Name :Glucagon-Like Peptide (GLP) I (7-36), amide, human  
 Cat No. :RP10773  
 Lot No. :PE2011905  
 Time Processed :9:17:14  
 Month-Day-Year Processed :06/02/2019

Pump A : 0.065% trifluoroacetic in 100% water (v/v)  
 Pump B : 0.05% trifluoroacetic in 100% acetonitrile (v/v)  
 Total Flow:1 ml/min  
 Wavelength:220 nm

<<LC Time Program>>

Time	Module	Command	Value
0.01	Pumps	Solvent B Conc.	5
25.00	Pumps	Solvent B Conc.	65
25.01	Pumps	Solvent B Conc.	95
27.00	Pumps	Solvent B Conc.	95
27.01	Pumps	Solvent B Conc.	5
33.00	Pumps	Solvent B Conc.	5
33.01	Controller	Stop	

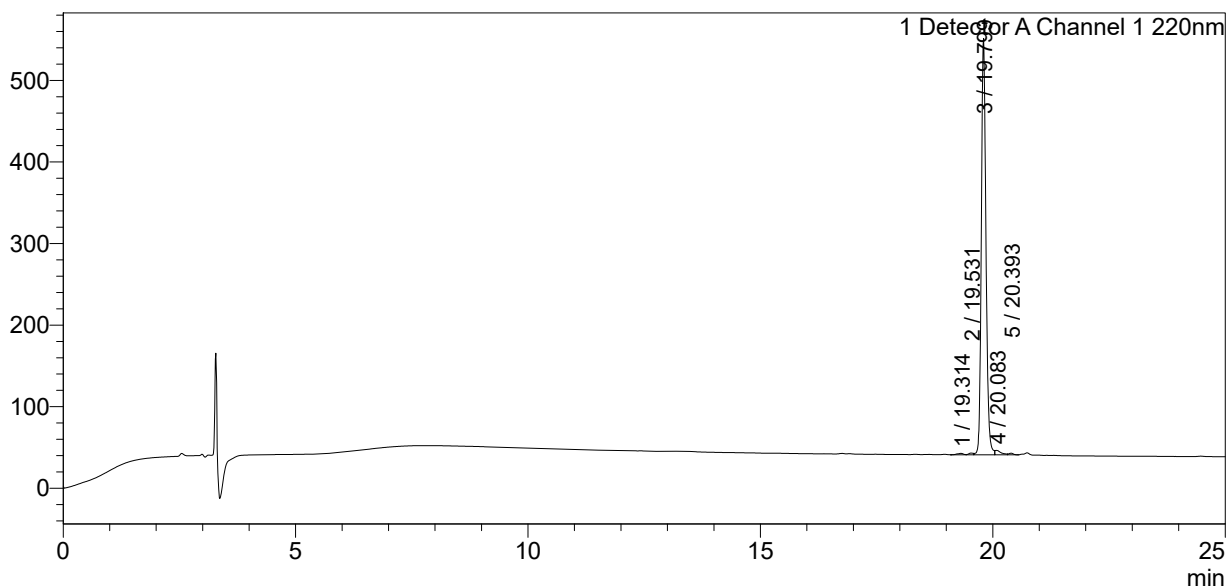
<<Column Performance>>

<Detector A>

Column : Inertsil ODS-3 4.6 x 250 mm  
 Equipment:ZJ17010507

<Chromatogram>

mV



<Peak Table>

Detector A Channel 1 220nm

Peak#	Ret. Time	Area	Height	Area%
1	19.314	15229	1696	0.420
2	19.531	14147	2095	0.390
3	19.799	3537977	510333	97.459
4	20.083	49251	5528	1.357
5	20.393	13632	2068	0.376
Total		3630236	521721	100.000