

Sample Name : Calcitonin Gene Related Peptide (CGRP) (8-37), human
 Cat No. : RP11089
 Lot No. : PE4261811
 Time Processed : 10:00:23
 Month-Day-Year Processed : 11/14/2018

Pump A : 0.065% trifluoroacetic in 100% water (v/v)
 Pump B : 0.05% trifluoroacetic in 100% acetonitrile (v/v)
 Total Flow: 1 ml/min
 Wavelength: 220 nm

Time	Unit	Command	Value	Comment
0.01	Pumps	Pump A B.Conc	5	
25.00	Pumps	Pump A B.Conc	65	
25.01	Pumps	Pump A B.Conc	95	
27.00	Pumps	Pump A B.Conc	95	
27.01	Pumps	Pump A B.Conc	5	
35.00	Pumps	Pump A B.Conc	5	
35.01	Controller	Stop		

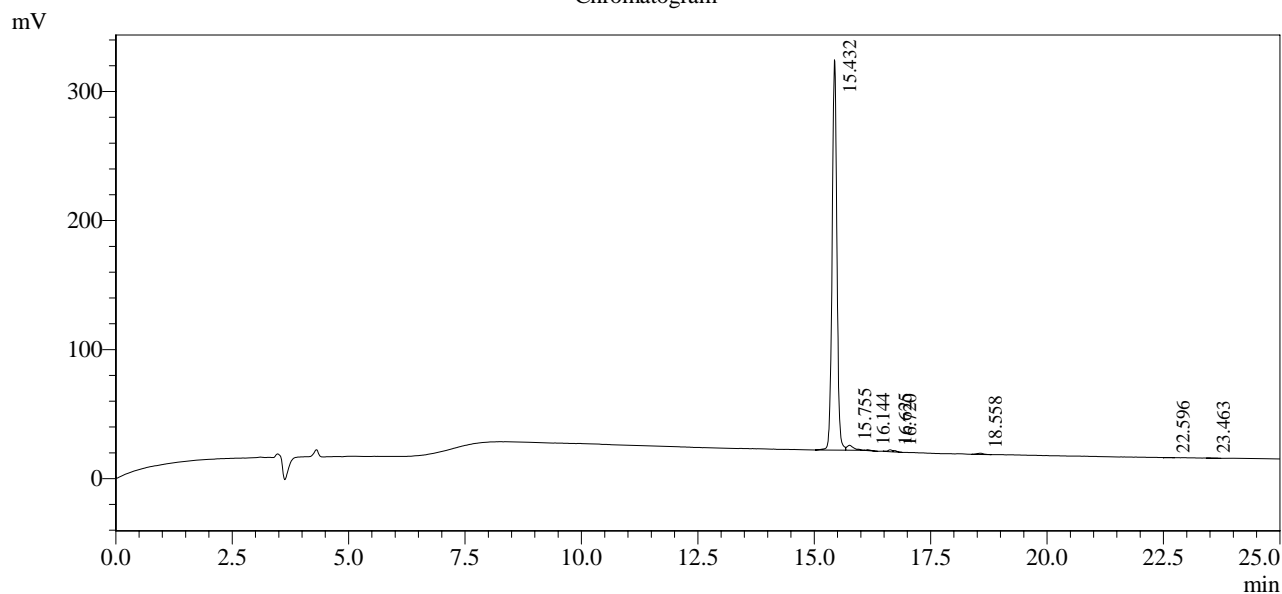
<<Column Performance>>

<Detector A>

Column : Inertsil ODS-3 4.6 x 250 mm

Equipment: GK11010011

Chromatogram



1 Det.A Ch1 / 220nm

Peak Table

Detector A Ch1 220nm

Peak#	Ret. Time	Area	Height	Area %
1	15.432	2155345	302414	96.808
2	15.755	39904	3844	1.792
3	16.144	4676	677	0.210
4	16.625	9097	1416	0.409
5	16.720	5378	1033	0.242
6	18.558	9028	924	0.406
7	22.596	1082	162	0.049
8	23.463	1898	180	0.085
Total		2226407	310649	100.000