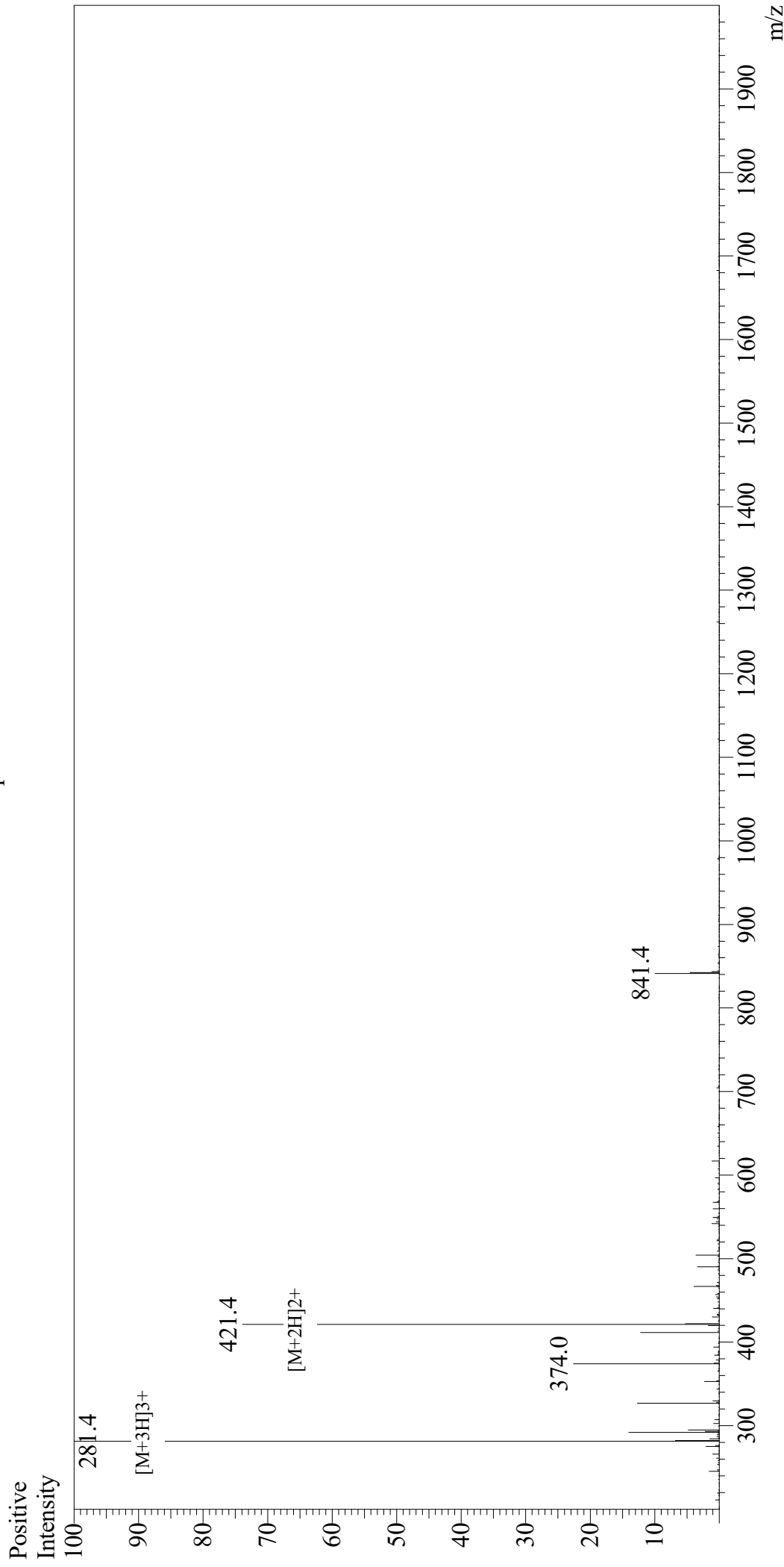


Mass Spectrum



Sample Information

User : Gary
Month-Day Processed : 08/06/19
Time Processed : 02:20:28 PM
Injection Volume : 0.3
Sample Name : Hexa-His
Cat No. : RP11737
Lot No. : E779619H
Theoretical MW : 840.85
Observed MW : 841.2

Interface : ESI
Nebulizing Gas Flow : 1.5L/min
CDL Temp : 250
Block Temp : 200

Equipment : GK11010007
Interface Bias : +4.5kV
Drying Gas Flow : 5 L/min
T.Flow : 0.2ml/min
B.conc : 50%H2O/50%MeOH