

Sample Name : Galanin, human
 Cat No.: RP10801
 Lot No.: E732319K
 Time Processed : 9:20:19
 Month-Day-Year Processed : 12/02/2019

Pump A : 0.065% trifluoroacetic in 100% water (v/v)
 Pump B : 0.05% trifluoroacetic in 100% acetonitrile (v/v)
 Total Flow: 1 ml/min
 Wavelength: 220 nm

<<LC Time Program>>

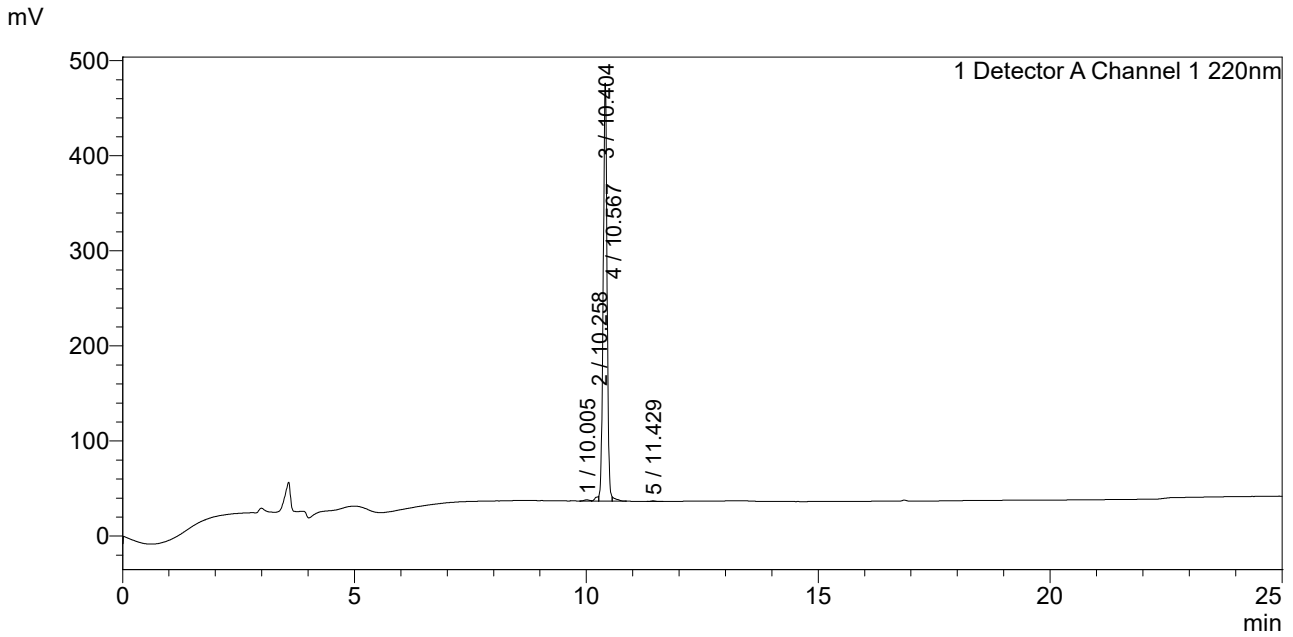
| Time | Module | Command | Value |
|-------|------------|-----------------|-------|
| 0.01 | Pumps | Solvent B Conc. | 5 |
| 25.00 | Pumps | Solvent B Conc. | 65 |
| 25.01 | Pumps | Solvent B Conc. | 95 |
| 31.00 | Pumps | Solvent B Conc. | 95 |
| 31.01 | Pumps | Solvent B Conc. | 5 |
| 40.00 | Pumps | Solvent B Conc. | 5 |
| 41.01 | Controller | Stop | |

<<Column Performance>>

<Detector A>

Column : Inertsil ODS-3 4.6 x 250 mm
 Equipment: ZJ19010324

<Chromatogram>



<Peak Table>

Detector A Channel 1 220nm

| Peak# | Ret. Time | Area | Height | Area% |
|-------|-----------|---------|--------|---------|
| 1 | 10.005 | 10398 | 1303 | 0.396 |
| 2 | 10.258 | 25520 | 4593 | 0.971 |
| 3 | 10.404 | 2564313 | 439940 | 97.552 |
| 4 | 10.567 | 23937 | 4028 | 0.911 |
| 5 | 11.429 | 4488 | 694 | 0.171 |
| Total | | 2628655 | 450557 | 100.000 |