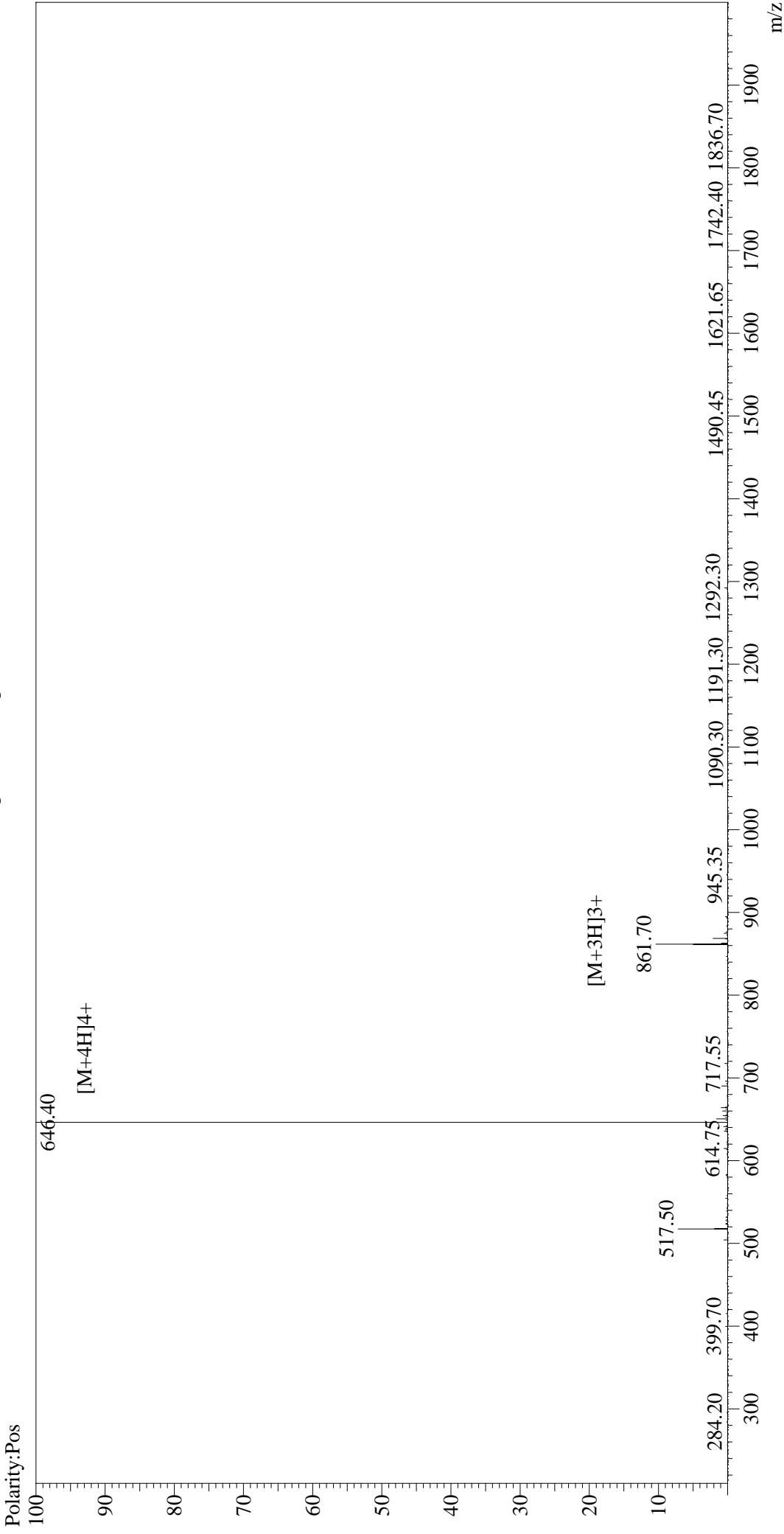


MS Spectrum Graph



Interface :ESI
 Nebulizing Gas Flow :1.5L/min
 CDL Temp :250°C
 Block Temp :200°C
 Interface Bias : +4.5 kV
 Drying Gas Flow :5 L/min
 T.Flow :0.2 ml/min
 B.conc :50%H2O/50%MeOH

Sample Information

Acquired by : Admin
 Date Acquired : 2016-12-16 15:58:39
 Injection Volume : 1
 Sample Name : Myelin Oligodendrocyte Glycoprotein Peptide (35-55), mouse, rat
 Cat No. : RP10245
 Lot No. : PE4081612
 Theoretical MW : 2581.98
 Observed MW : 2581.60