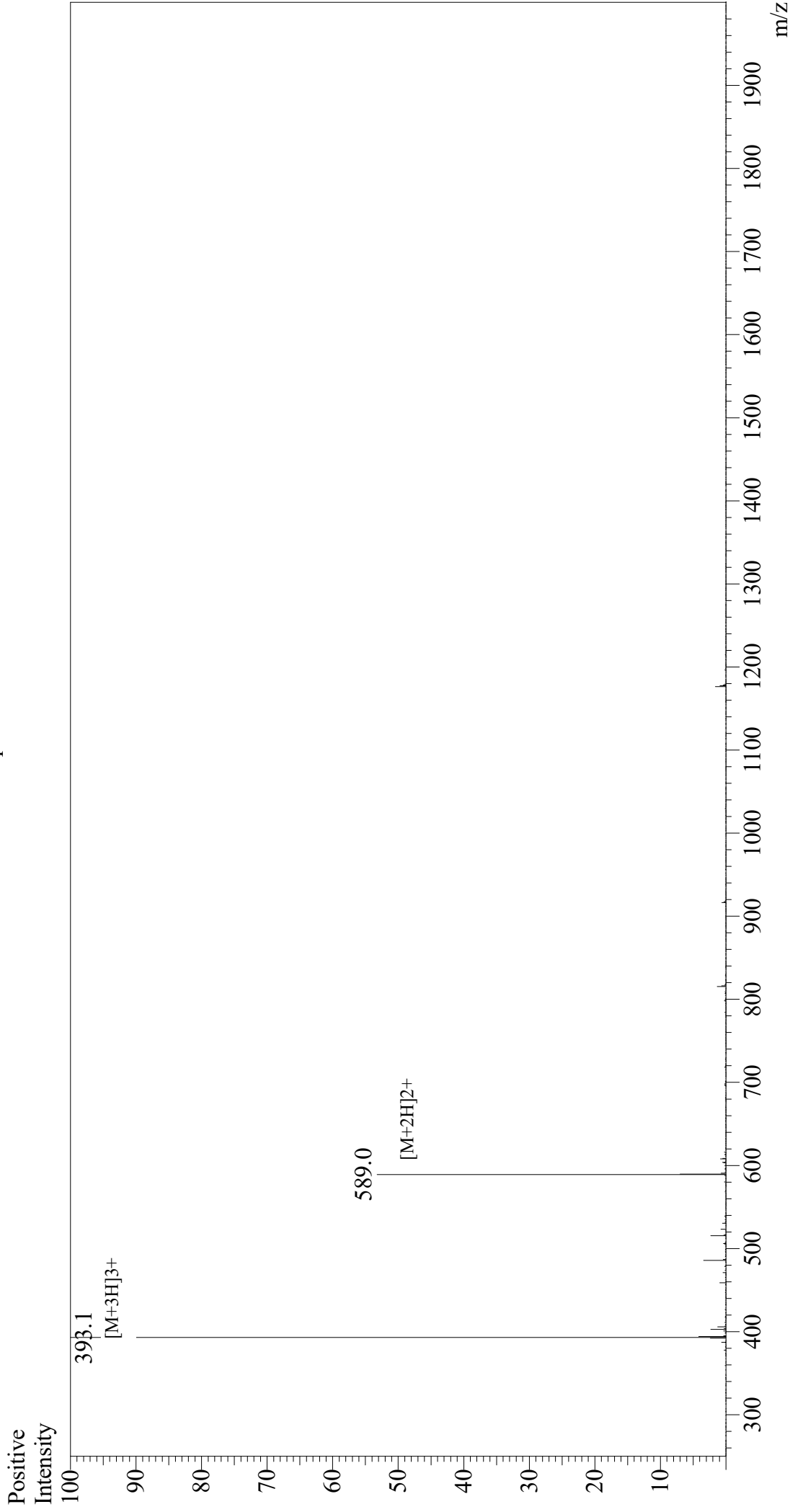


Mass Spectrum



Sample Information
Month-Day/Year Processed : 01/27/21
Time Processed : 3:50:47 AM
Injection Volume : 0.6
Sample Name : PSA1 (141-150)
Cat No. : RP20434
Lot No. : E0643621A
Theoretical MW : 1176.50
Observed MW : 1176.3

Interface : ESI
Nebulizing Gas Flow : 1.5L/min
CDL Temp : 250
Block Temp : 200

Equipment : GK11010007
Interface Bias : +3.5 kV
Drying Gas Flow : 5 L/min
T.Flow : 0.2 ml/min
B.conc : 50%H2O/50%MeOH