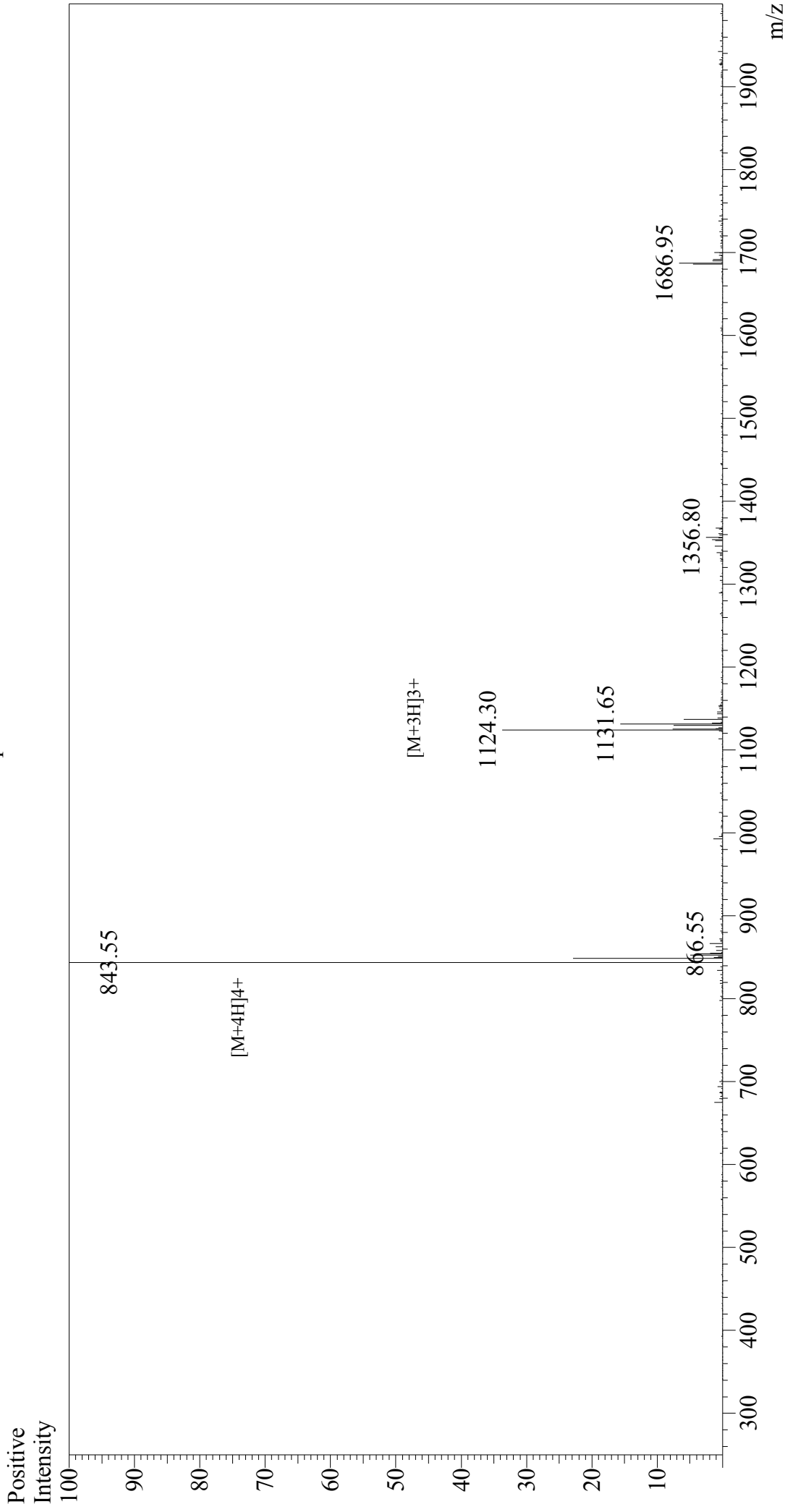


Mass Spectrum



Sample Information

Acquired by : Gary
Month-Day Processed : 02/20/18
Time Processed : 15:56:16
Injection Volume : 0.2
Sample Name : Exendin (9-39)
Cat No. : RP10872
Lot No. : PE4941802
Theoretical MW : 3369.76
Observed MW : 3370.20

Interface : ESI
Nebulizing Gas Flow : 1.5L/min
CDL Temp : 250°C
Block Temp : 200°C

Interface Bias : +4.5 kV
Drying Gas Flow : 5 L/min
T.Flow : 0.2 ml/min
B.conc : 50% H₂O/50% MeOH