

Sample Name : Substance P (7-11)  
 Cat. No. :RP10182  
 Lot. No. :E4689619I  
 Time Processed :10:27:34  
 Month-Day-Year Processed :09/30/2019

Pump A : 0.065% trifluoroacetic in 100% water (v/v)  
 Pump B : 0.05% trifluoroacetic in 100% acetonitrile (v/v)  
 Total Flow:1 ml/min  
 Wavelength:220 nm

| Time  | Unit       | Command       | Value | Comment |
|-------|------------|---------------|-------|---------|
| 0.01  | Pumps      | Pump A B.Conc | 15    |         |
| 25.00 | Pumps      | Pump A B.Conc | 75    |         |
| 25.01 | Pumps      | Pump A B.Conc | 95    |         |
| 31.00 | Pumps      | Pump A B.Conc | 95    |         |
| 31.01 | Pumps      | Pump A B.Conc | 15    |         |
| 40.00 | Pumps      | Pump A B.Conc | 15    |         |
| 40.01 | Controller | Stop          |       |         |

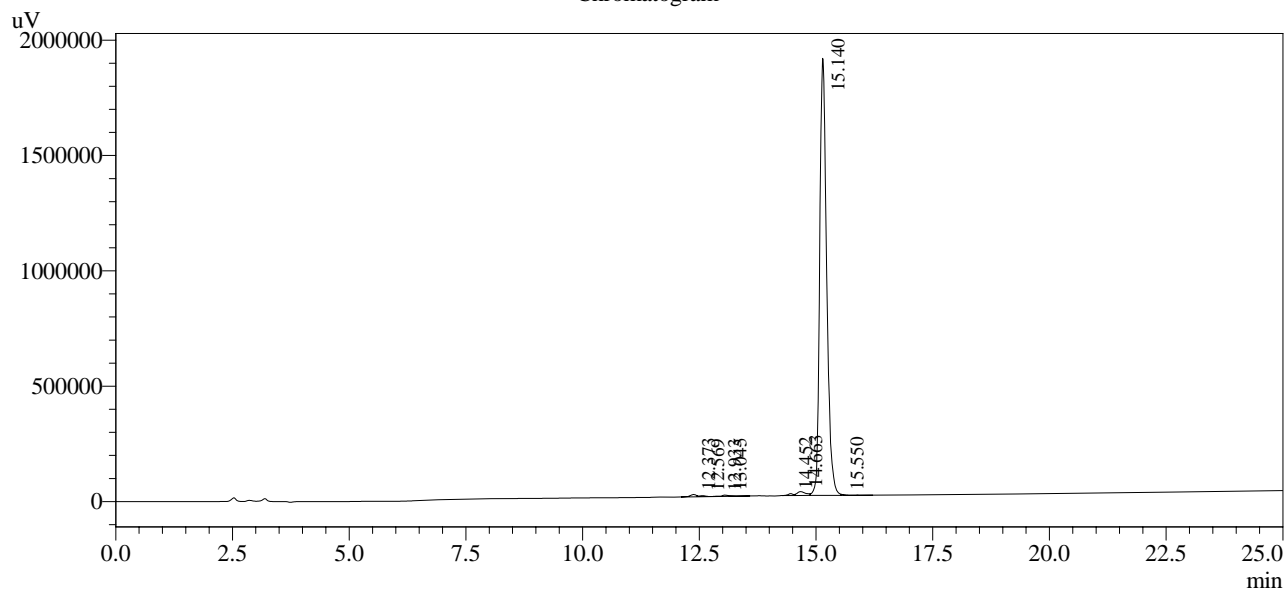
<<Column Performance>>

<Detector A>

Column : Inertsil ODS-3 4.6 x 250 mm

Equipment: GK11010009

Chromatogram



1 Det.A Ch1 / 220nm

Peak Table

Detector A Ch1 220nm

| Peak# | Ret. Time | Area     | Height  | Area %  |
|-------|-----------|----------|---------|---------|
| 1     | 12.373    | 90809    | 9940    | 0.450   |
| 2     | 12.569    | 52067    | 4508    | 0.258   |
| 3     | 12.933    | 2416     | 923     | 0.012   |
| 4     | 13.045    | 62271    | 5542    | 0.309   |
| 5     | 14.452    | 67538    | 8126    | 0.335   |
| 6     | 14.663    | 214623   | 16877   | 1.065   |
| 7     | 15.140    | 19640101 | 1894868 | 97.430  |
| 8     | 15.550    | 28307    | 4284    | 0.140   |
| Total |           | 20158132 | 1945069 | 100.000 |