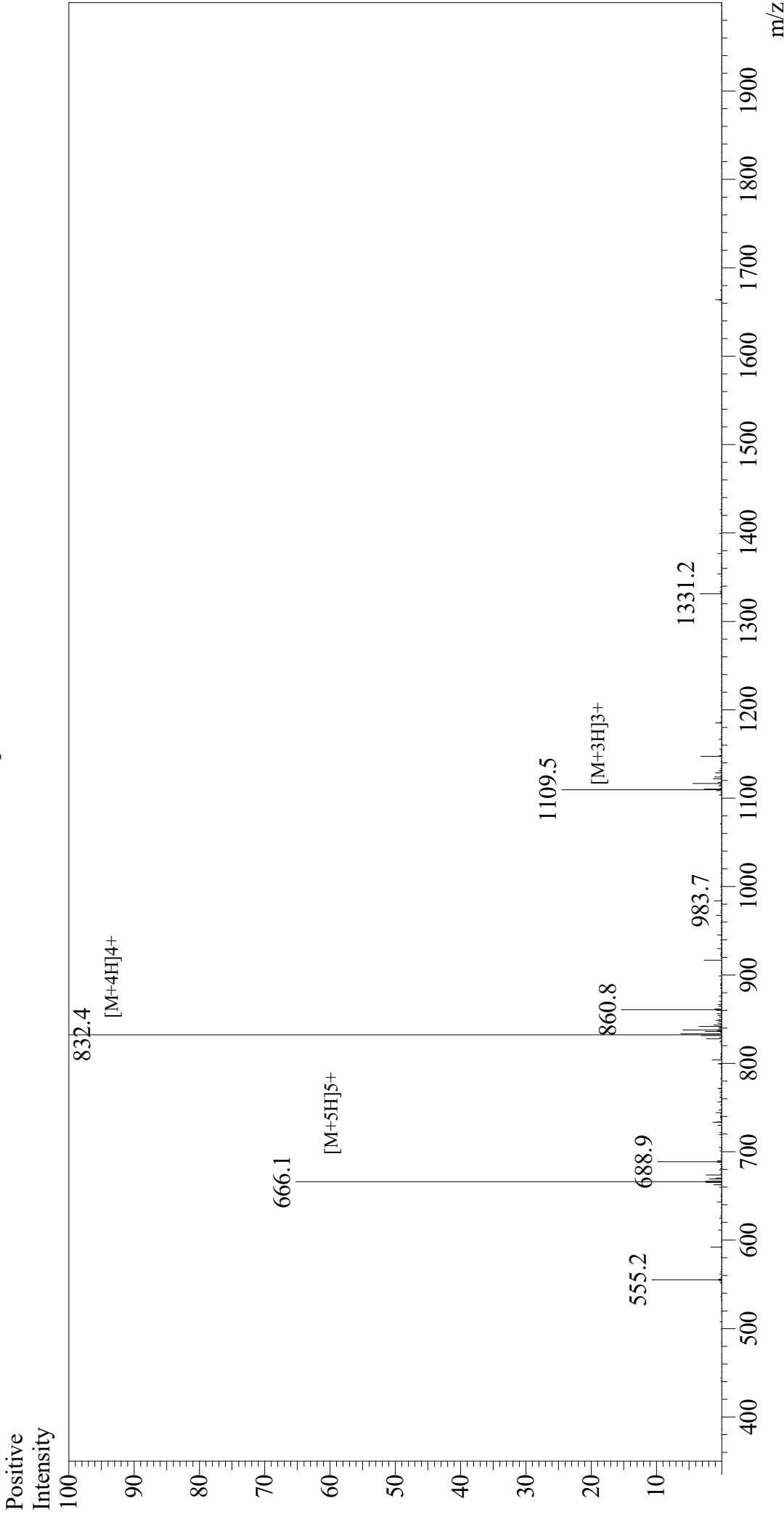


Mass Spectrum



Sample Information
Month-Day Processed : 05/28/21
Time Processed : 7:19:55
Injection Volume : 0.4
Sample Name : VIP, human, ovine, porcine, rat
Cat. No. : RP10085
Lot. No. : E4392321E
Theoretical MW : 3325.80
Observed MW : 3325.6

Interface : ESI
Nebulizing Gas Flow : 1.5L/min
CDL Temp : 250
Block Temp : 200

Equipment : GK11010007
Interface Bias : +4.5 kV
Drying Gas Flow : 5 L/min
T.Flow : 0.2 ml/min
B.conc : 50% H2O/50% MeOH