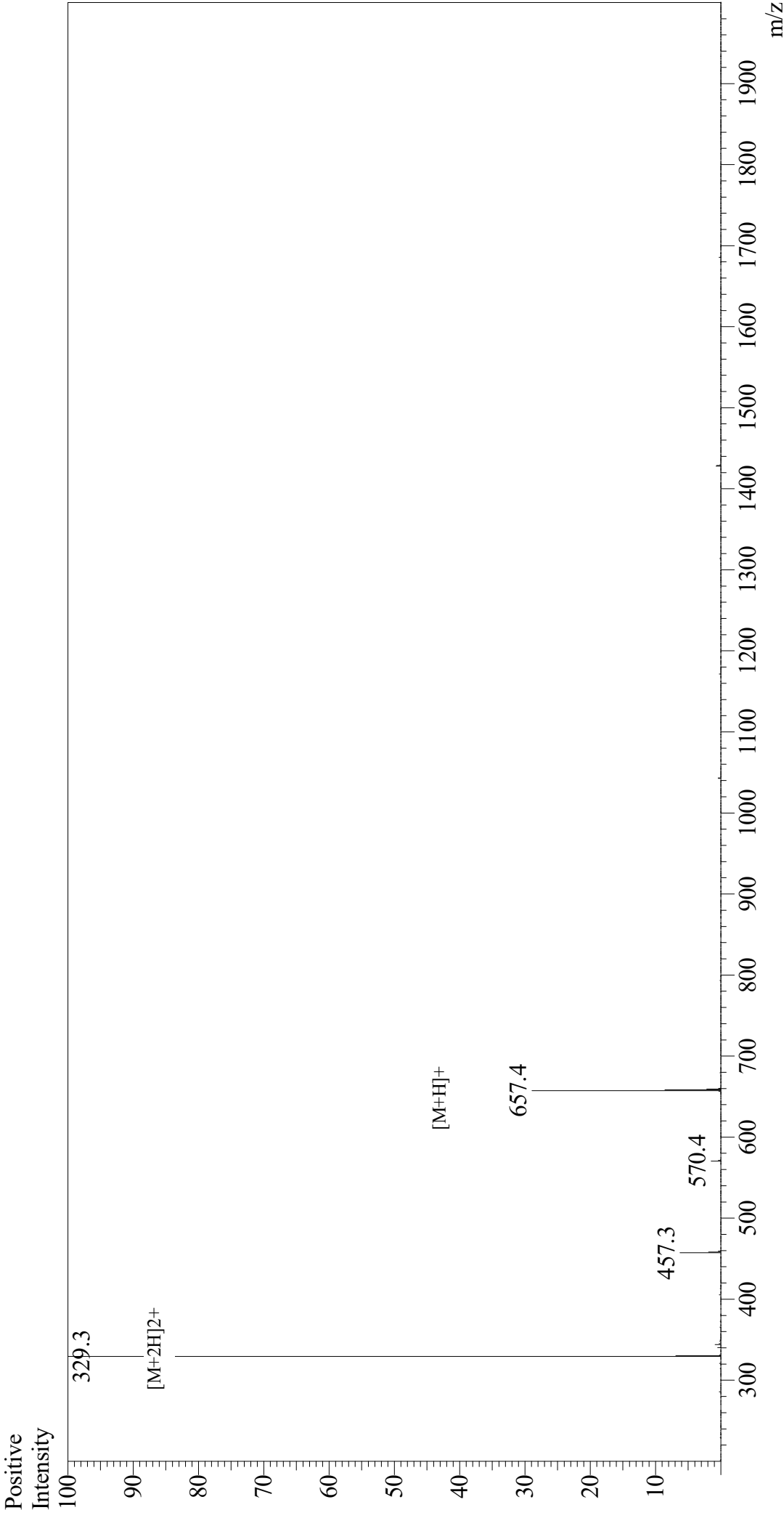


Mass Spectrum



Sample Information

Acquired by : Gary
Month-Day Processed : 02/23/20
Time Processed : 05:52:59 PM
Injection Volume : 0.5
Sample Name : Protease-Activated Receptor-2 Activating Peptide
Cat. No. : RP19975
Lot. No. : E6688120B
Theoretical MW : 656.83
Observed MW : 656.6

Interface

Interface : ESI
Nebulizing Gas Flow : 1.5L/min
CDL Temp : 250
Block Temp : 200

Equipment

Equipment : GK11010007
Interface Bias : +4.5 kV
Drying Gas Flow : 5 L/min
T.Flow : 0.2 ml/min
B.conc : 50%H2O/50%MeOH