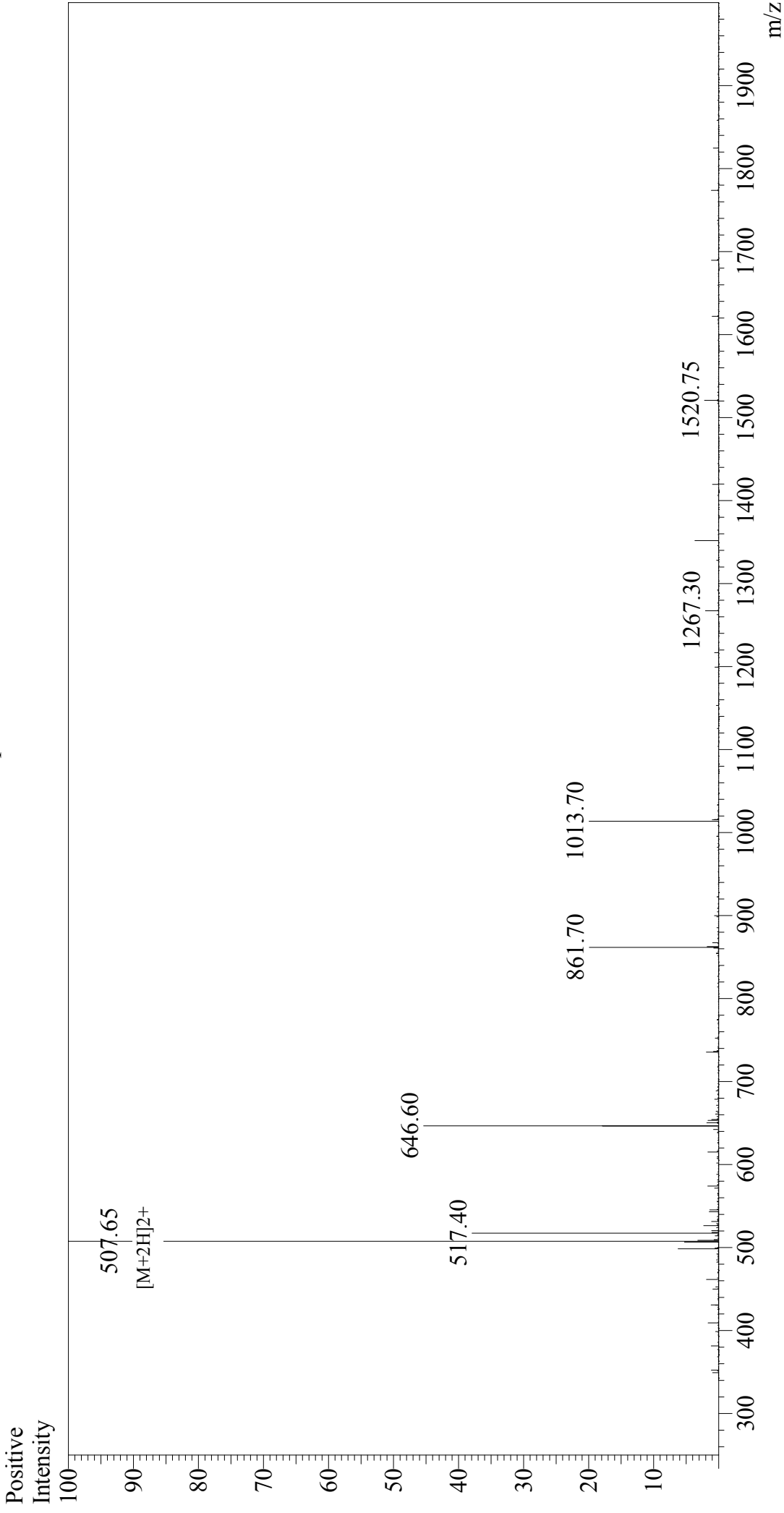


Mass Spectrum



Sample Information

Acquired by : Gary
Month-Day Processed : 02/24/18
Time Processed : 16:41:51
Injection Volume : 0.4
Sample Name : DYKDDDDK
Cat No: RP10586
Lot No: PE4061802
Theoretical MW : 1012.97
Observed MW : 1013.30

Interface

Interface : ESI
Nebulizing Gas Flow : 1.5L/min
CDL Temp : 250°C
Block Temp : 200°C

Interface Bias

Interface Bias : +4.5 kV
Drying Gas Flow : 5 L/min
T.Flow : 0.2 ml/min
B.conc : 50% H₂O/50% MeOH