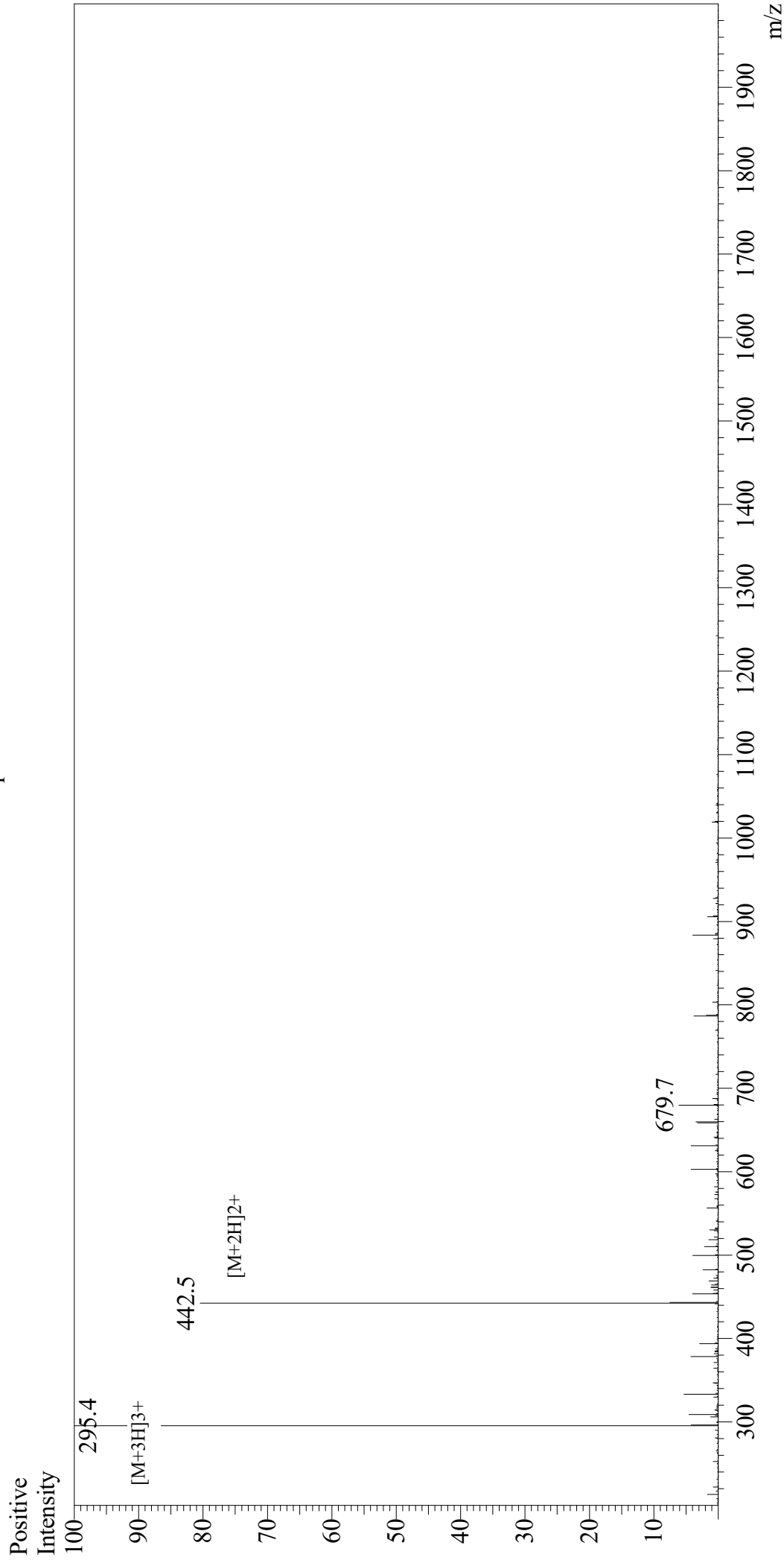


Mass Spectrum



Sample Information

User : Gary
Month-Day Processed : 12/24/18
Time Processed : 01:06:21 PM
Injection Volume : 0.1
Sample Name : Nuclear Localization Signal Peptide
Cat No. : RP20292
Lot No. : PE7891812
Theoretical MW : 883.15
Observed MW : 883.2

Interface : ESI
Nebulizing Gas Flow : 1.5L/min
CDL Temp : 250
Block Temp : 200

Equipment : GK11010007
Interface Bias : +4.5kV
Drying Gas Flow : 5 L/min
T.Flow : 0.2ml/min
B.conc : 50%H2O/50%MeOH