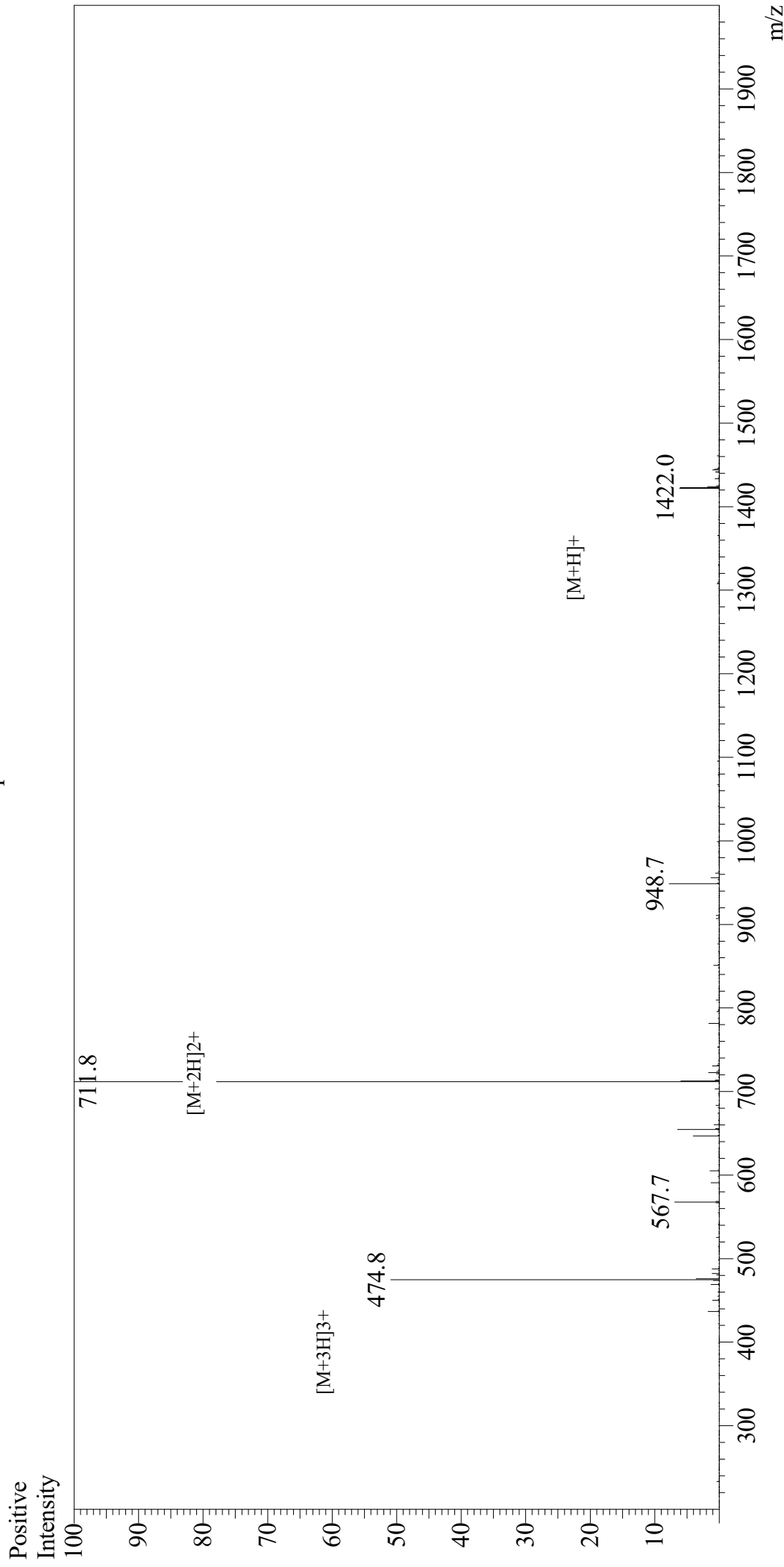


# Mass Spectrum



## Sample Information

User : Gary  
Month-Day Processed : 09/25/19  
Time Processed : 01:02:43 PM  
Injection Volume : 0.5  
Sample Name : Mas7  
Cat No. : RP10602  
Lot No. : E4744619I  
Theoretical MW : 1421.81  
Observed MW : 1421.6

Interface : ESI  
Nebulizing Gas Flow : 1.5L/min  
CDL Temp : 250  
Block Temp : 200

Equipment : GK11010007  
Interface Bias : +4.5kV  
Drying Gas Flow : 5 L/min  
T.Flow : 0.2ml/min  
B.conc : 50%H<sub>2</sub>O/50%MeOH