

Sample Name: Mas7
 Cat No. : RP10602
 Lot No. : E4744619I
 Time Processed: 4:09:28 PM
 Month-Day-Year
 Processed :09/24/2019

Pump A : 0.065% trifluoroacetic in 100% water (v/v)
 Pump B : 0.05% trifluoroacetic in 100% acetonitrile (v/v)
 Total Flow:1 ml/min
 Wavelength:220 nm

<<LC Time Program>>

| Time | Module | Command | Value |
|-------|------------|-----------------|-------|
| 0.01 | Pumps | Solvent B Conc. | 5 |
| 25.00 | Pumps | Solvent B Conc. | 65 |
| 25.01 | Pumps | Solvent B Conc. | 95 |
| 27.00 | Pumps | Solvent B Conc. | 95 |
| 27.01 | Pumps | Solvent B Conc. | 5 |
| 33.00 | Pumps | Solvent B Conc. | 5 |
| 33.00 | Controller | Stop | |

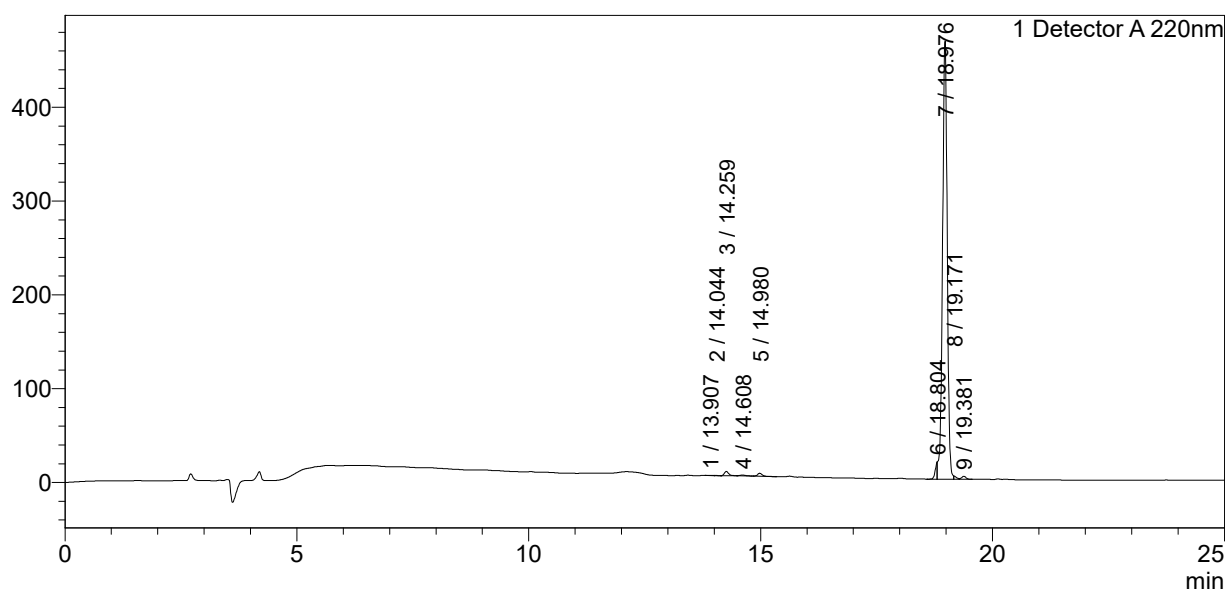
<<Column Performance>>

<Detector A>

Column : Alltima™ C18 4.6 x 250 mm
 Equipment:ZJ19010325

<Chromatogram>

mV



<Peak Table>

Detector A 220nm

| Peak# | Ret. Time | Area | Height | Area% |
|-------|-----------|---------|--------|---------|
| 1 | 13.907 | 1797 | 282 | 0.052 |
| 2 | 14.044 | 726 | 136 | 0.021 |
| 3 | 14.259 | 30653 | 4632 | 0.889 |
| 4 | 14.608 | 6704 | 802 | 0.194 |
| 5 | 14.980 | 21391 | 3107 | 0.620 |
| 6 | 18.804 | 57069 | 17593 | 1.654 |
| 7 | 18.976 | 3298290 | 466915 | 95.611 |
| 8 | 19.171 | 12276 | 3420 | 0.356 |
| 9 | 19.381 | 20774 | 3191 | 0.602 |
| Total | | 3449680 | 500078 | 100.000 |