

Sample Name :Carcinoembryonic Antigen (CEA)
 Cat No.: RP20328
 Lot No.: E7065519J
 Time Processed :10:23:37
 Month-Day-Year Processed :10/03/2019

Pump A : 0.065% trifluoroacetic in 100% water (v/v)
 Pump B : 0.05% trifluoroacetic in 100% acetonitrile (v/v)
 Total Flow:1 ml/min
 Wavelength:220 nm

<<LC Time Program>>

Time	Module	Command	Value
0.01	Pumps	Solvent B Conc.	5
25.00	Pumps	Solvent B Conc.	65
25.01	Pumps	Solvent B Conc.	95
27.00	Pumps	Solvent B Conc.	95
27.01	Pumps	Solvent B Conc.	5
33.00	Pumps	Solvent B Conc.	5
33.00	Controller	Stop	

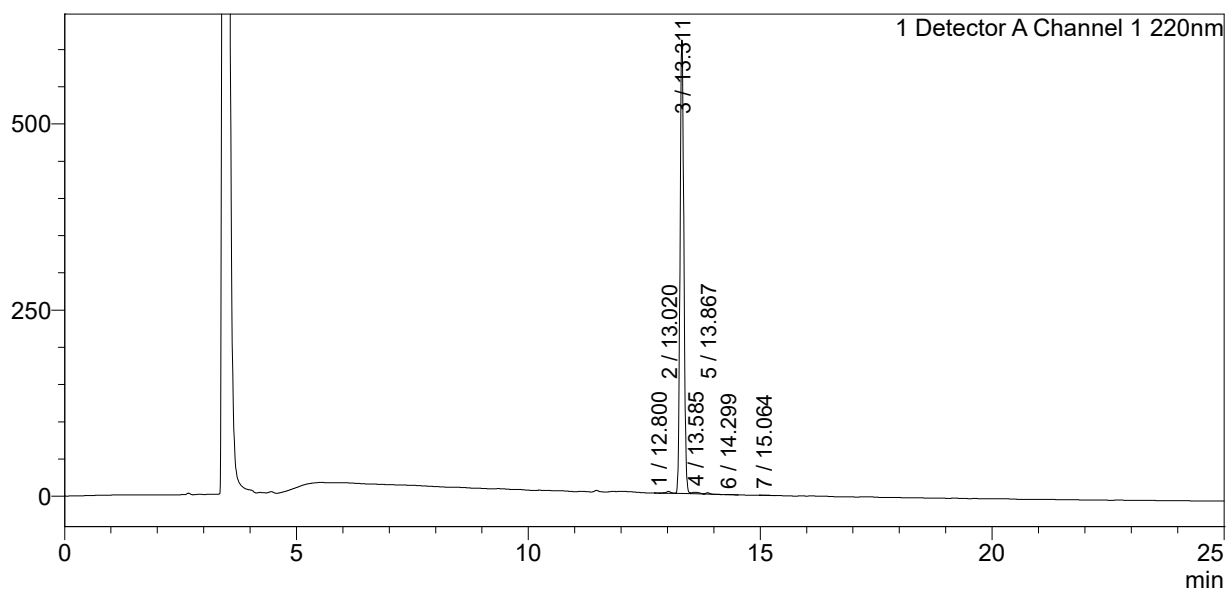
<<Column Performance>>

<Detector A>

Column : Inertsil ODS-3 4.6 x 250 mm
 Equipment:ZJ19010324

<Chromatogram>

mV



<Peak Table>

Detector A Channel 1 220nm

Peak#	Ret. Time	Area	Height	Area%
1	12.800	1271	272	0.036
2	13.020	17998	2424	0.507
3	13.311	3496327	609202	98.434
4	13.585	22402	2152	0.631
5	13.867	11091	1839	0.312
6	14.299	1429	194	0.040
7	15.064	1441	88	0.041
Total		3551959	616171	100.000