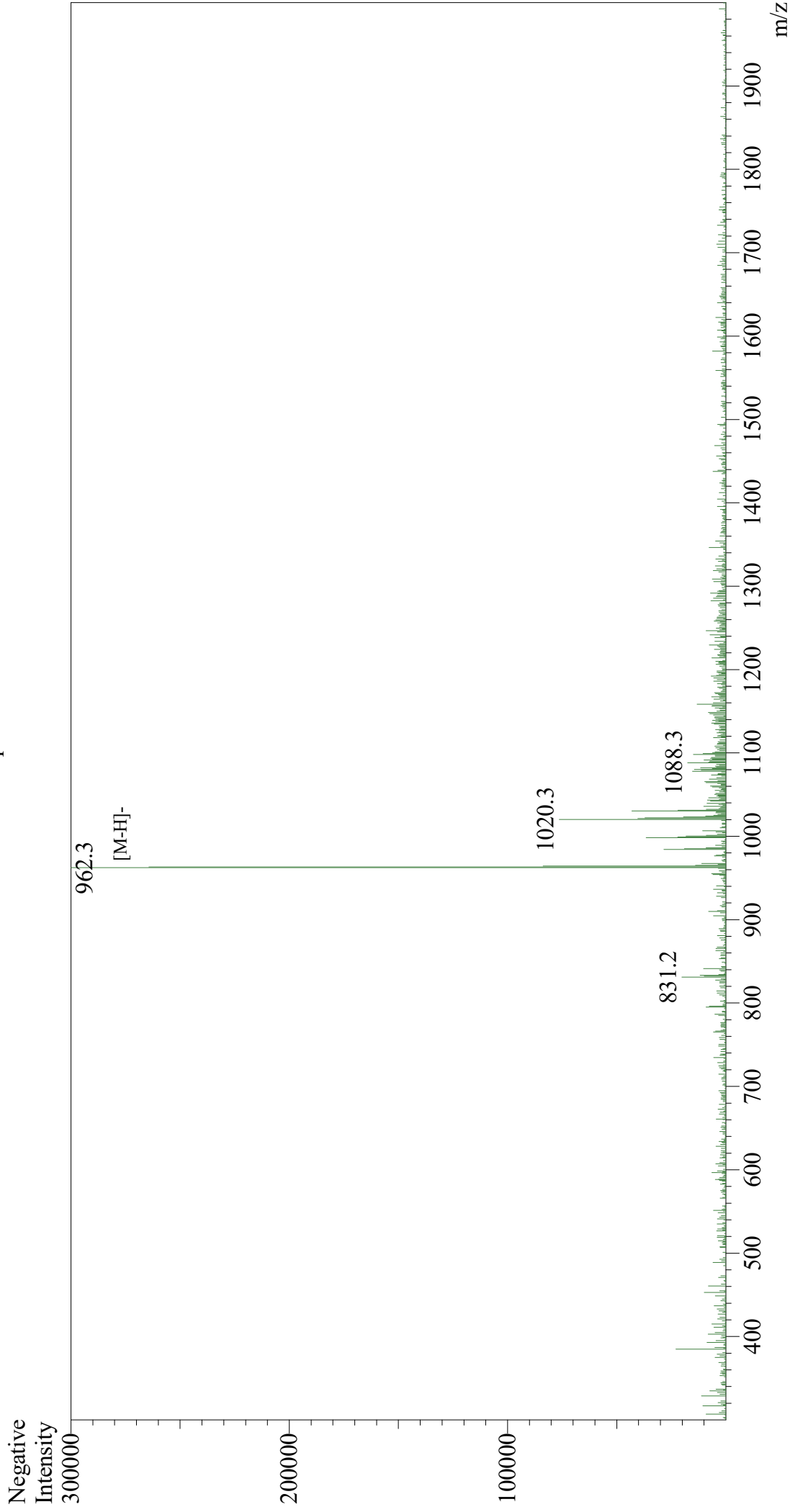


Mass Spectrum



Sample Information

User : Gary
Month-Day Processed : 10/15/20
Time Processed : 10:37:18 PM
Injection Volume : 0.3
Sample Name : Carcinoembryonic Antigen (CEA)
Cat. No. : RP20328
Lot. No. : E2541420J
Theoretical MW : 964.10
Observed MW : 963.3

Interface : ESI
Nebulizing Gas Flow : 1.5L/min
CDL Temp : 250
Block Temp : 200
Equipment : GK11010007
Interface Bias : -3.5 kV
Drying Gas Flow : 5 L/min
T.Flow : 0.2 ml/min
B.conc : 50%H2O/50%MeOH