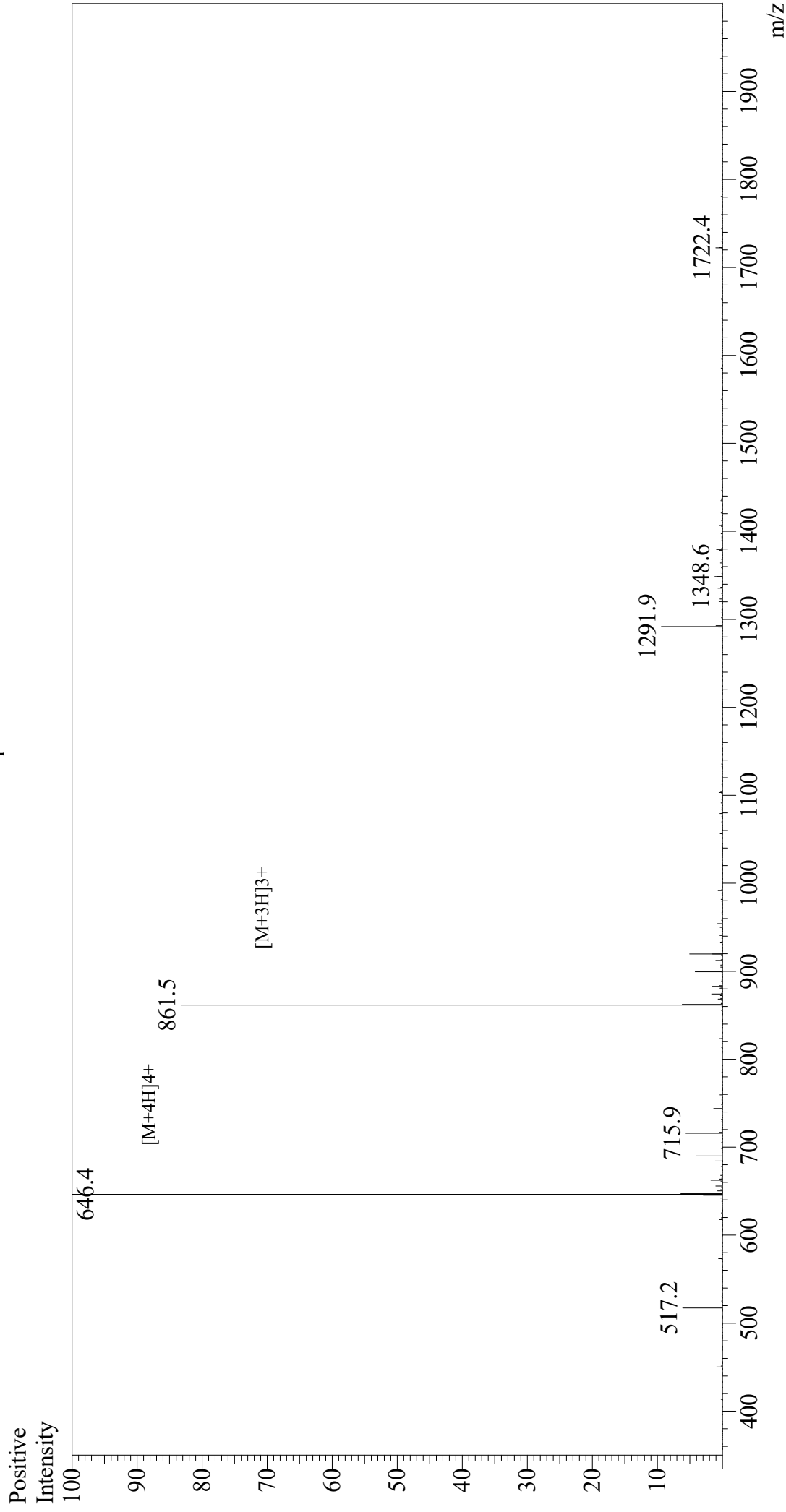


# Mass Spectrum



## Sample Information

Month-Day Processed : 04/30/21  
Time Processed : 7:17:50  
Injection Volume : 0.4  
Sample Name : MOG(35-55)  
Cat. No. : RP10245  
Lot. No. : E9382221D  
Theoretical MW : 2581.98  
Observed MW : 2581.6

Interface : ESI  
Nebulizing Gas Flow : 1.5L/min  
CDL Temp : 250  
Block Temp : 200

Equipment : GK11010007  
Interface Bias : +4.5 kV  
Drying Gas Flow : 5 L/min  
T.Flow : 0.2 ml/min  
B.conc : 50% $\text{H}_2\text{O}$ /50% $\text{MeOH}$