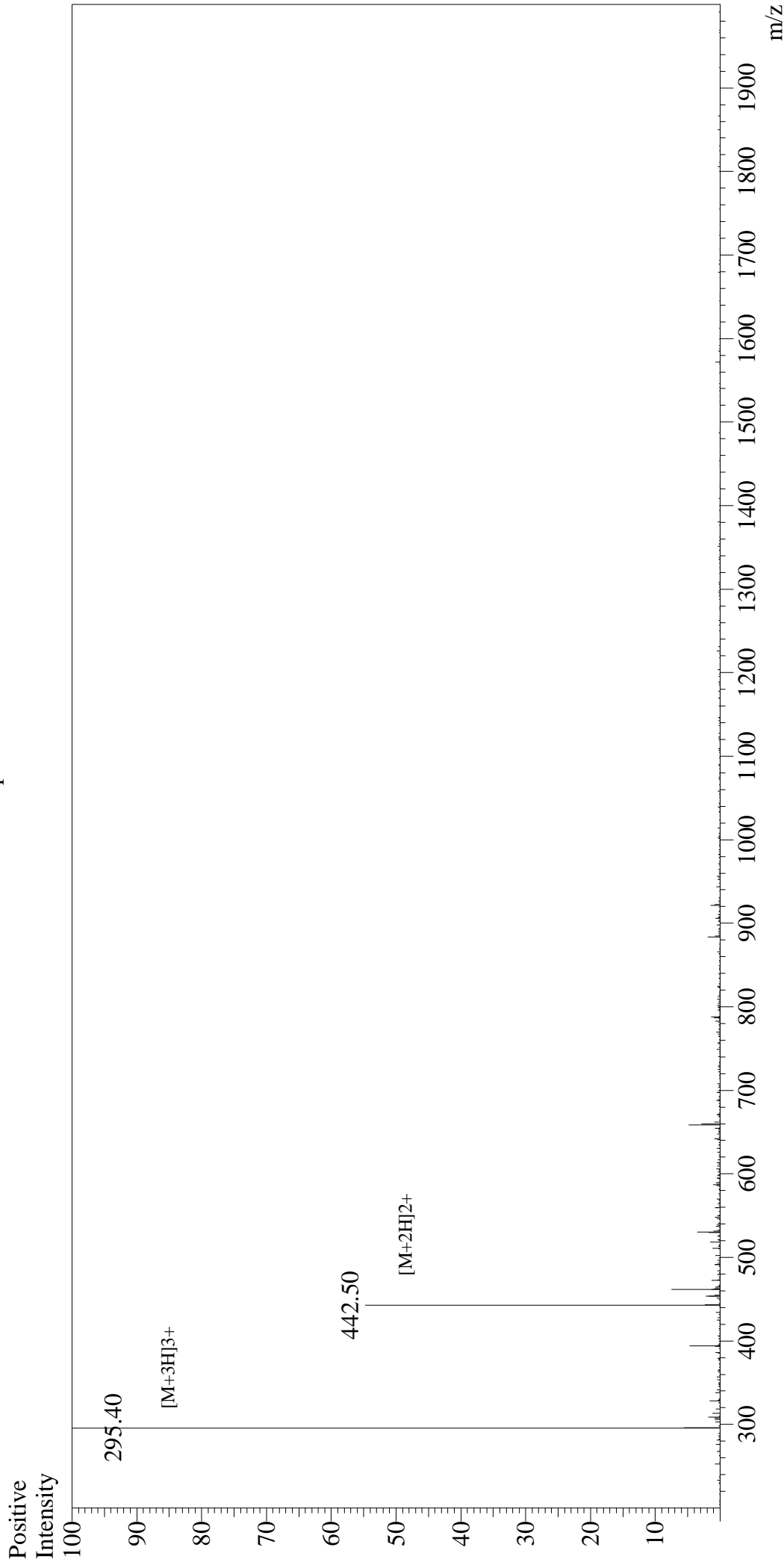


# Mass Spectrum



## Sample Information

User : Gary  
Month-Day Processed : 10/28/17  
Time Processed : 21:56:02  
Injection Volume : 0.2  
Sample Name : Nuclear Localisation Signal Peptide  
Cat No. : RP20292  
Lot No. : PE7241710  
Theoretical MW : 883.15  
Observed MW : 883.20

Interface : ESI  
Nebulizing Gas Flow : 1.5L/min  
CDL Temp : 250°C  
Block Temp : 200°C

Interface Bias : +4.5kV  
Drying Gas Flow : 5 L/min  
T.Flow : 0.2ml/min  
B.conc : 50%H2O/50%MeOH