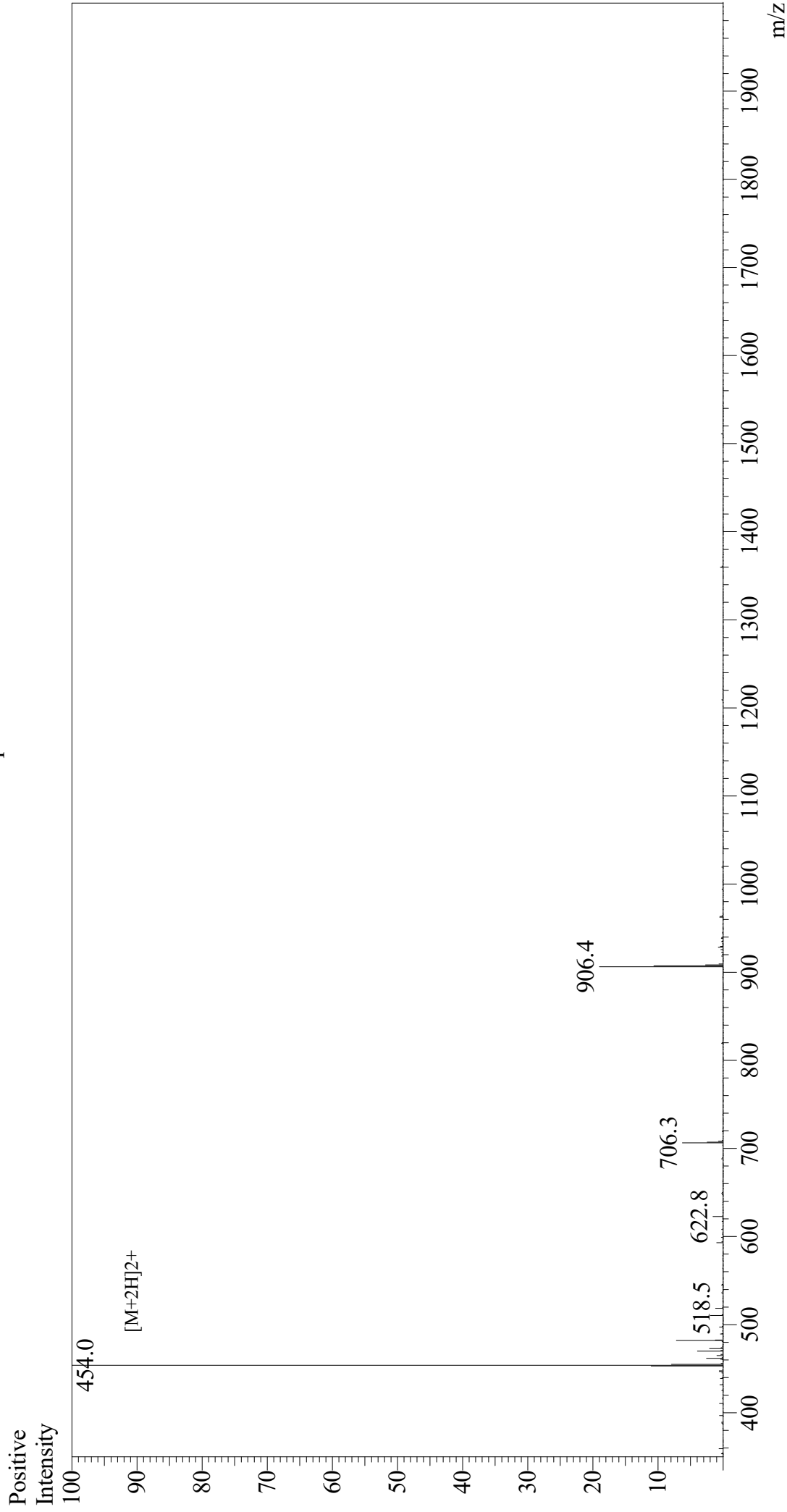


Mass Spectrum



Sample Information
Month-Day Processed : 07/03/21
Time Processed : 8:15:05
Injection Volume : 0.4
Sample Name : OVA G4 peptide
Cat No : RP20398
Lot No : E6646921G
Theoretical MW : 906.08
Observed MW : 906.0

Interface : ESI
Nebulizing Gas Flow : 1.5L/min
CDL Temp : 250
Block Temp : 200

Equipment : GK11010007
Interface Bias : +4.5 kV
Drying Gas Flow : 5 L/min
T.Flow : 0.2 ml/min
B.conc : 50% H2O/50% MeOH