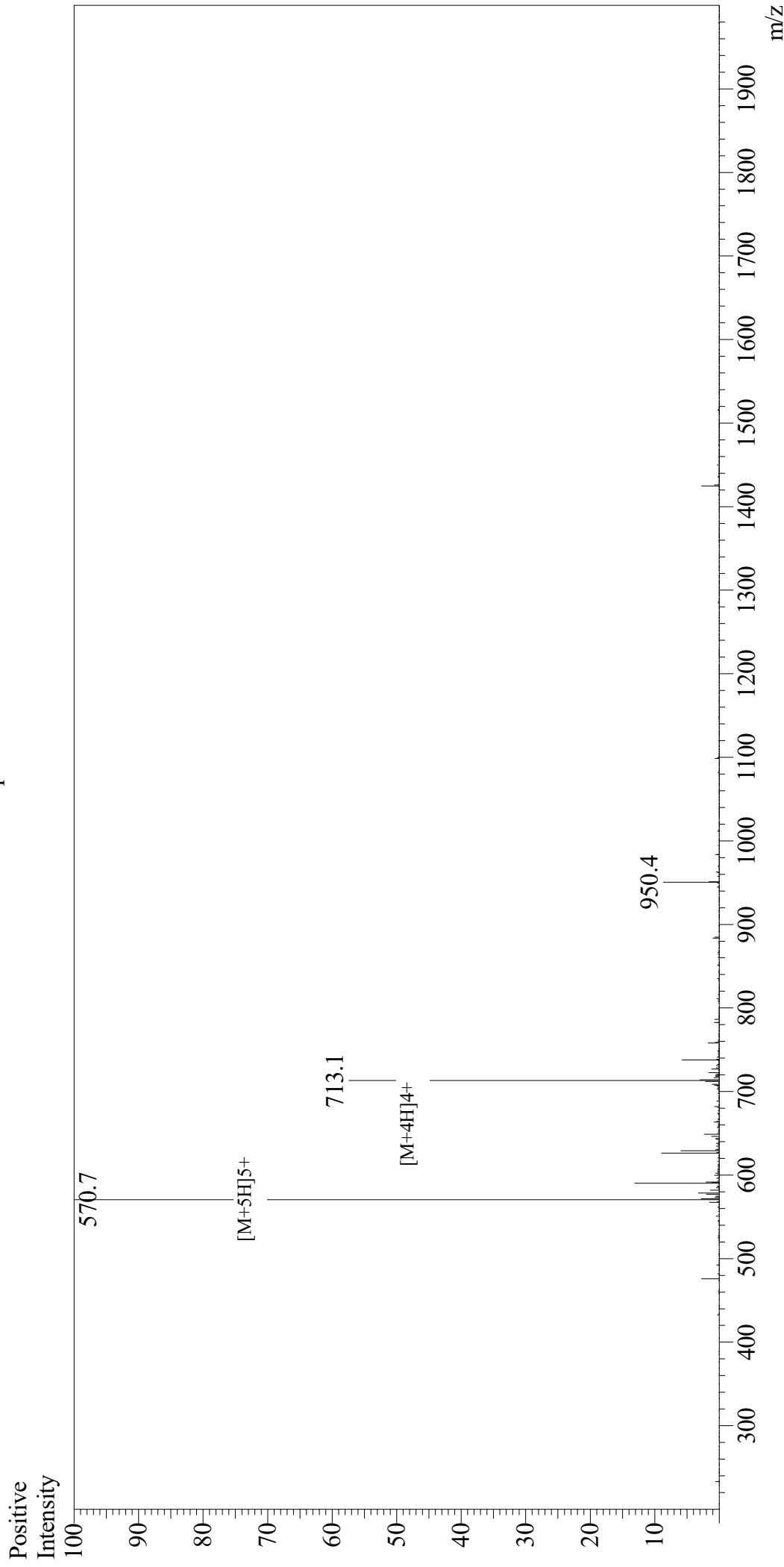


Mass Spectrum



Sample Information

User : Gary
Month-Day Processed : 06/19/19
Time Processed : 10:28:00 PM
Injection Volume : 0.4
Sample Name : Pep-1 (uncapped)
Cat No. : RP10130
Lot No. : E3923119F
Theoretical MW : 2848.30
Observed MW : 2848.5

Interface : ESI
Nebulizing Gas Flow : 1.5L/min
CDL Temp : 250
Block Temp : 200

Equipment : GK11010007
Interface Bias : +4.5kV
Drying Gas Flow : 5 L/min
T.Flow : 0.2ml/min
B.conc : 50%H2O/50%MeOH