

Sample Name : DYKDDDDK Peptide
 Cat.No : RP10586
 Lot.No : E6880421F
 Time Processed: 23:25:07
 Year-Month-Day: 2021/6/4

Pump A : 0.065% trifluoroacetic in 100% water (v/v)
 Pump B : 0.05% trifluoroacetic in 100% acetonitrile (v/v)
 Total Flow: 1 ml/min

<<Detector A>>
 Wavelength Ch1 : 220 nm

<<LC Time Program>>

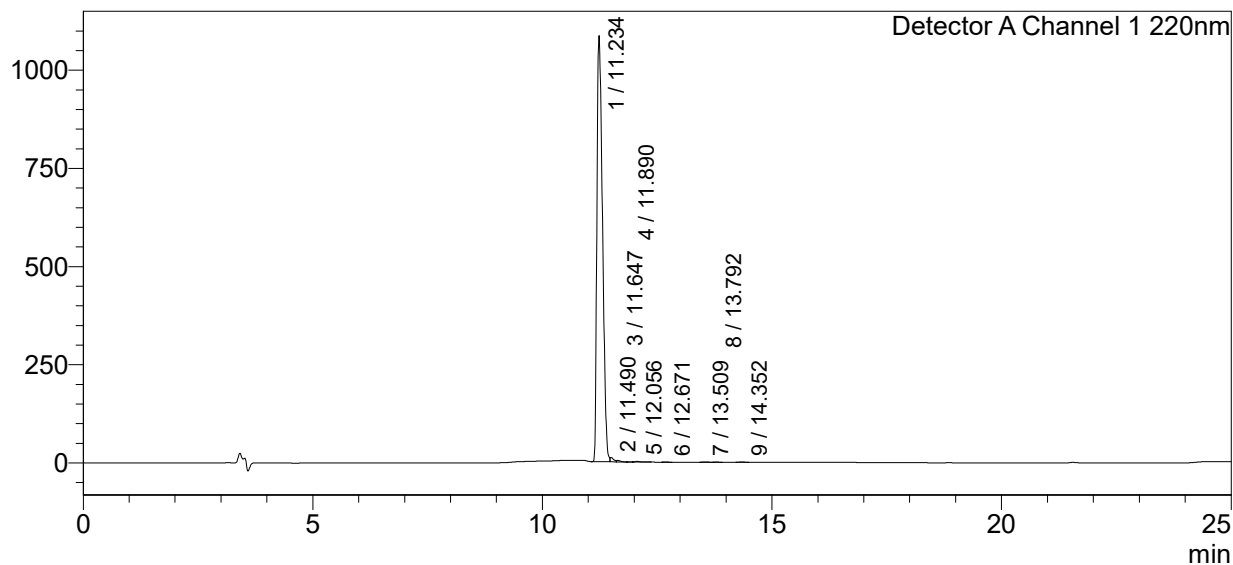
Time	Module	Command	Value	Comment
0.01	Pumps	Solvent B Conc.	0	
5.00	Pumps	Solvent B Conc.	0	
20.00	Pumps	Solvent B Conc.	30	
25.00	Pumps	Solvent B Conc.	65	
25.01	Pumps	Solvent B Conc.	95	
30.00	Pumps	Solvent B Conc.	95	
30.01	Pumps	Solvent B Conc.	0	
40.00	Pumps	Solvent B Conc.	0	
40.01	Controller	Stop		

<<Column Performance>>

<Detector A>
 Column : Inertsil ODS-3 4.6 x 250 mm
 Equipment: ZJ19010015

<Chromatogram>

mV



<Peak Table>

Detector A Channel 1 220nm

Peak#	Ret. Time	Area	Height	Area%
1	11.234	9155576	1084929	98.811
2	11.490	54991	11048	0.593
3	11.647	19875	3496	0.214
4	11.890	1375	351	0.015
5	12.056	12948	1691	0.140
6	12.671	4888	738	0.053
7	13.509	4978	566	0.054
8	13.792	3638	674	0.039
9	14.352	7482	875	0.081
Total		9265752	1104368	100.000