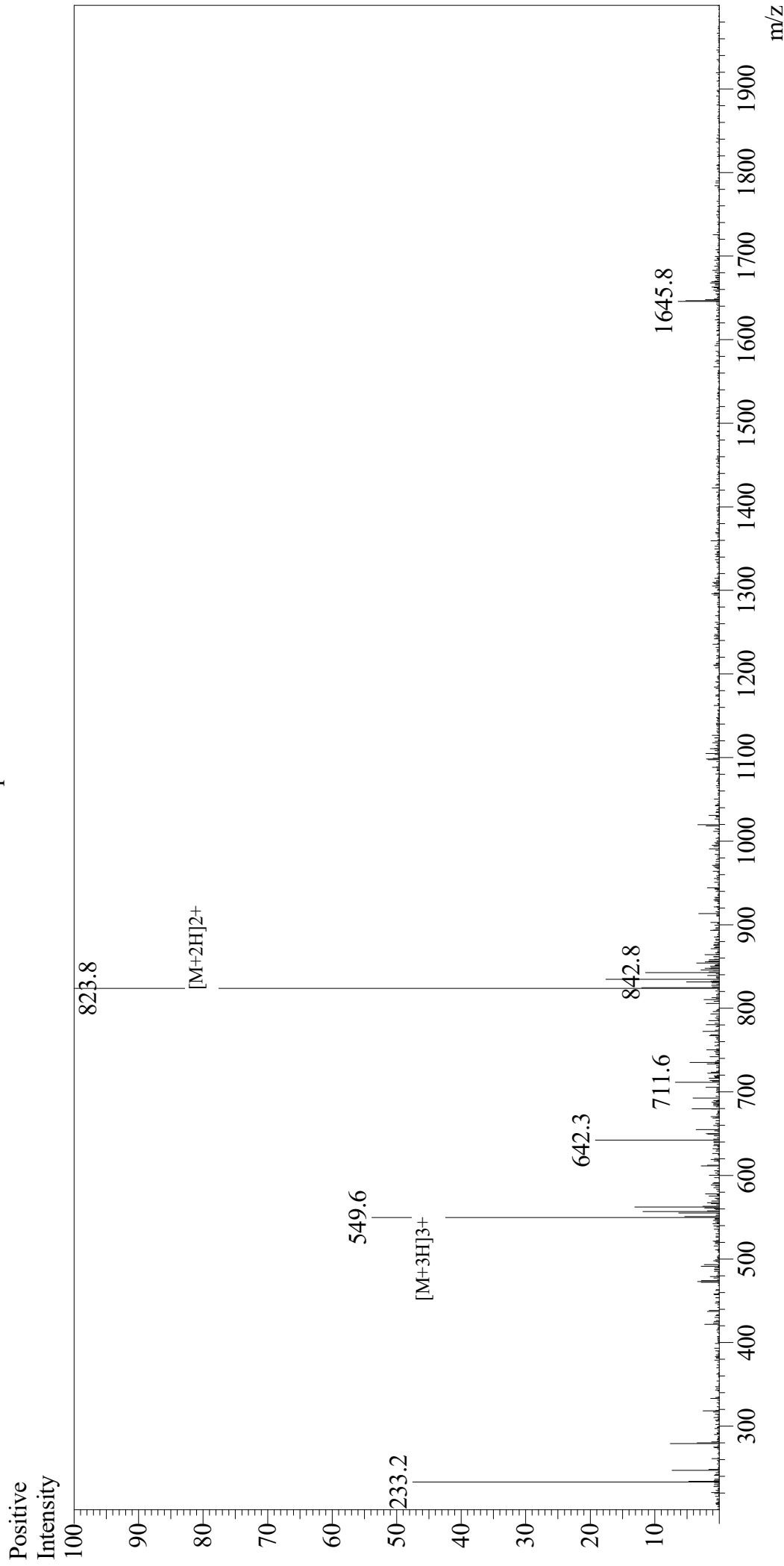


Mass Spectrum



Sample Information

User : Gary
Month-Day Processed : 09/11/19
Time Processed : 08:36:32 PM
Injection Volume : 0.4
Sample Name : InsB 9-23
Cat No. : RP20391
Lot No. : E1587719I
Theoretical MW : 1645.90
Observed MW : 1645.6

Interface : ESI
Nebulizing Gas Flow : 1.5L/min
CDL Temp : 250
Block Temp : 200

Equipment : GK11010007
Interface Bias : +4.5kV
Drying Gas Flow : 5 L/min
T.Flow : 0.2ml/min
B.conc : 50%H2O/50%MeOH