

Sample Name : Calcitonin, salmon  
Cat No: RP11099  
Lot No : PE9871806

Pump A : 0.065% trifluoroacetic in 100% water (v/v)  
Pump B : 0.05% trifluoroacetic in 100% acetonitrile (v/v)  
Total Flow: 1 ml/min  
Wavelength: 220 nm

<<LC Time Program>>

| Time  | Module     | Command         | Value |
|-------|------------|-----------------|-------|
| 0.01  | Pumps      | Solvent B Conc. | 5     |
| 25.00 | Pumps      | Solvent B Conc. | 65    |
| 25.01 | Pumps      | Solvent B Conc. | 95    |
| 27.00 | Pumps      | Solvent B Conc. | 95    |
| 27.01 | Pumps      | Solvent B Conc. | 5     |
| 33.00 | Pumps      | Solvent B Conc. | 5     |
| 33.01 | Controller | Stop            |       |

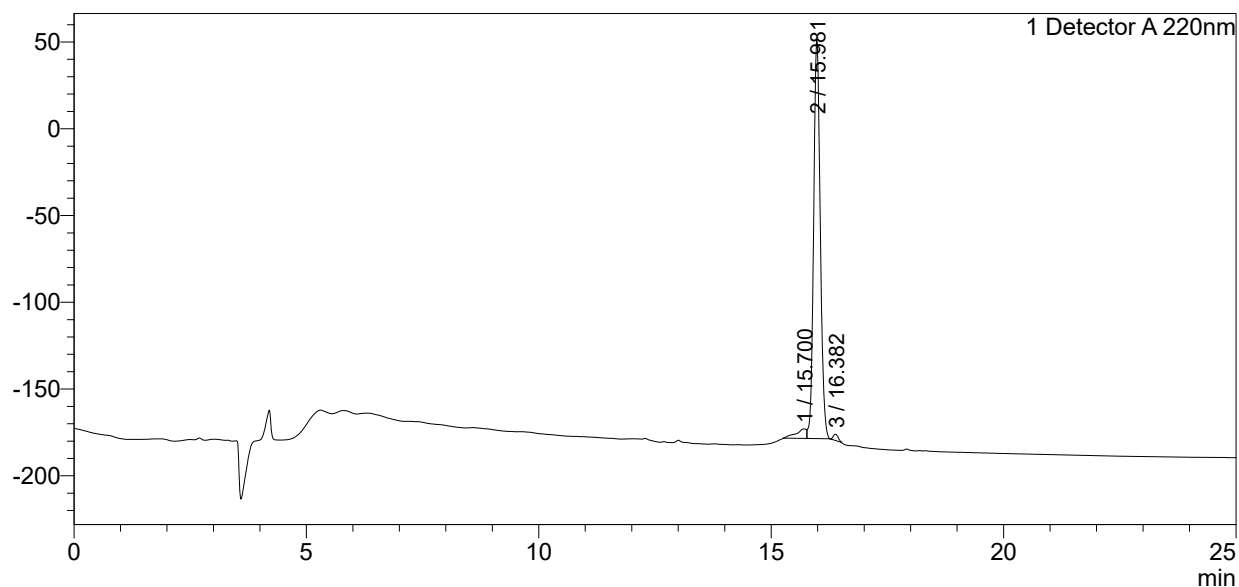
<<Column Performance>>

<Detector A>

Column : Alltima™ C18 4.6 x 250 mm

### <Chromatogram>

mV



### <Peak Table>

Detector A 220nm

| Peak# | Ret. Time | Area    | Height | Area%   |
|-------|-----------|---------|--------|---------|
| 1     | 15.700    | 87872   | 5518   | 3.671   |
| 2     | 15.981    | 2280366 | 230237 | 95.275  |
| 3     | 16.382    | 25228   | 3569   | 1.054   |
| Total |           | 2393467 | 239324 | 100.000 |