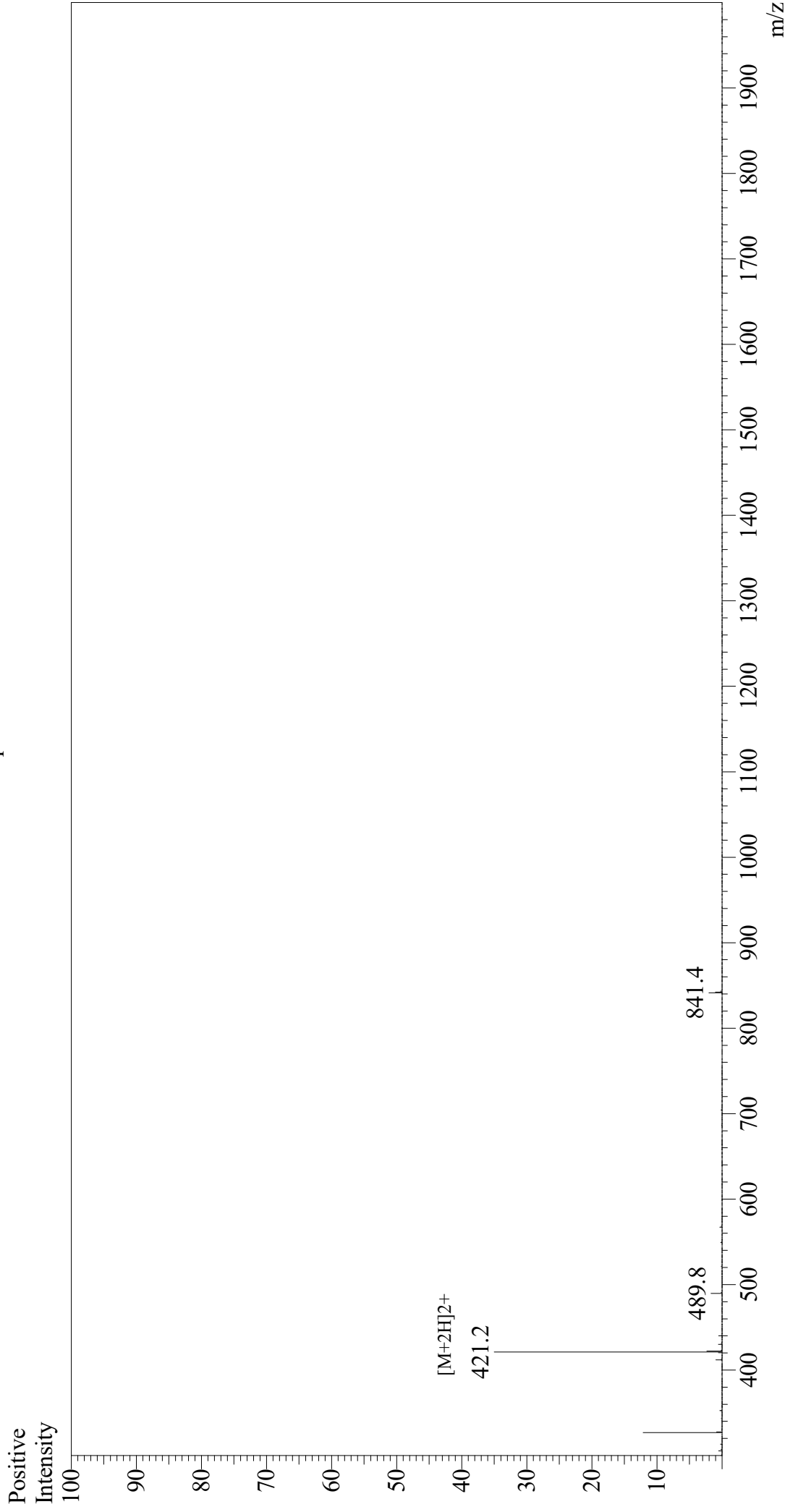


Mass Spectrum



Sample Information
Month-Day Processed : 06/11/21
Time Processed : 11:46:32 AM
Injection Volume : 0.4
Sample Name : Hexa-His
Cat No. : RP11737
Lot No. : E4018821F
Theoretical MW : 840.85
Observed MW : 840.4

Interface : ESI
Nebulizing Gas Flow : 1.5L/min
CDL Temp : 250
Block Temp : 200

Equipment : GK11010007
Interface Bias : +4.5 kV
Drying Gas Flow : 5 L/min
T.Flow : 0.2 ml/min
B.conc : 50%H2O/50%MeOH