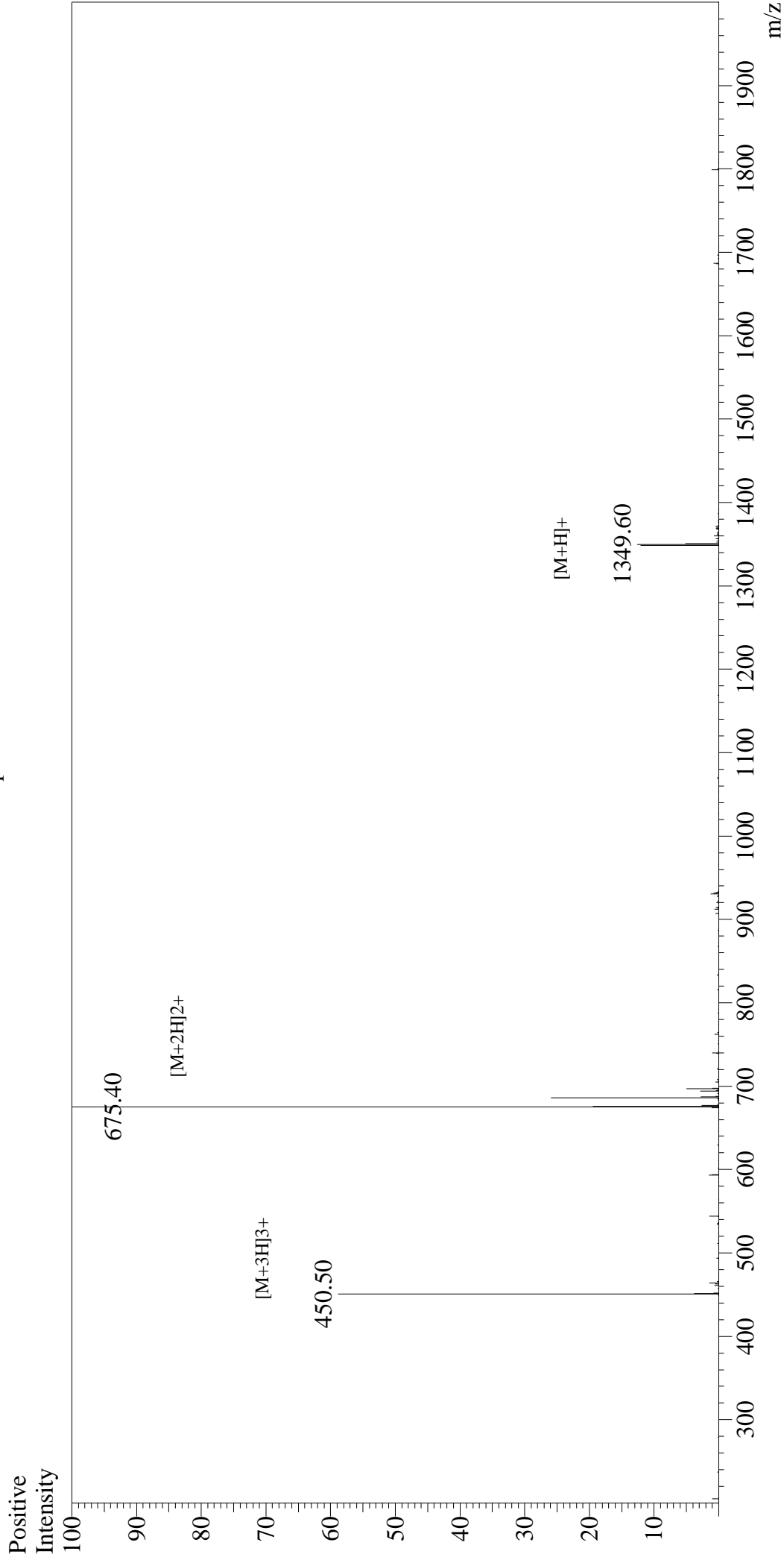


Mass Spectrum



Sample Information

User : Gary
Month-Day Processed : 09/29/16
Time Processed : 10:44:47
Injection Volume : 0.2
Sample Name : BDC2.5 mimotope 1040-31
Cat No. : RP20518
Lot No. : PE9801609
Theoretical MW : 1348.60
Observed MW : 1348.80

Interface : ESI
Nebulizing Gas Flow : 1.5L/min
CDL Temp : 250°C
Block Temp : 200°C

Interface Bias : +4.5kV
Drying Gas Flow : 5 L/min
T.Flow : 0.2ml/min
B.conc : 50%H2O/50%MeOH