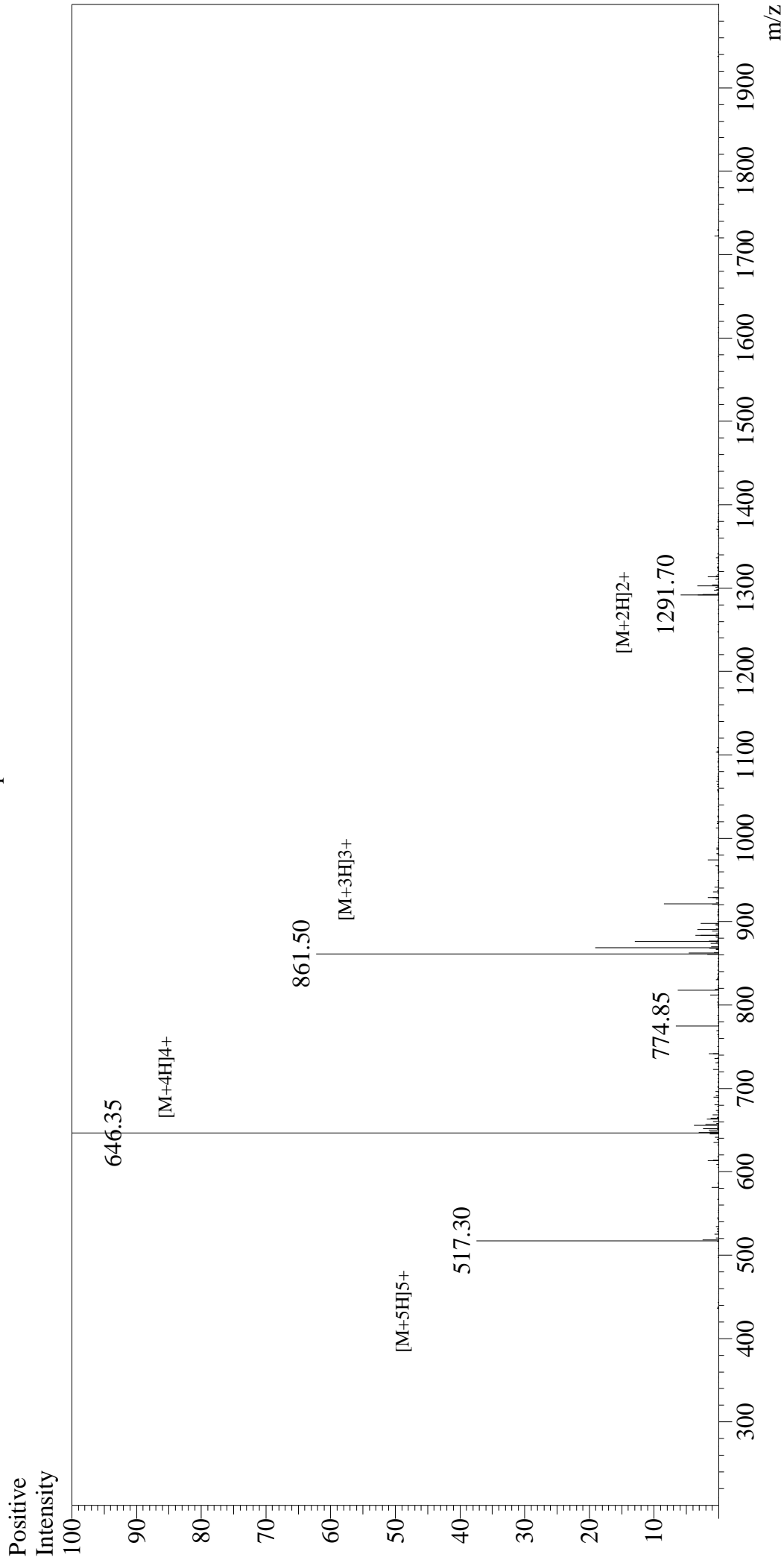


Mass Spectrum



Sample Information

User : Gary
Month-Day Processed : 03/31/16
Time Processed : 14:59:09
Injection Volume : 0.2
Sample Name : MOG 35-55
Cat No. : RPI0245
Lot No. : PE6581603
Theoretical MW : 2581.96
Observed MW : 2581.40

Interface : ESI
Nebulizing Gas Flow : 1.5L/min
CDL Temp : 250°C
Block Temp : 200°C

Interface Bias : +4.5kV
Drying Gas Flow : 5 L/min
T.Flow : 0.2ml/min
B.conc : 50%H2O/50%MeOH