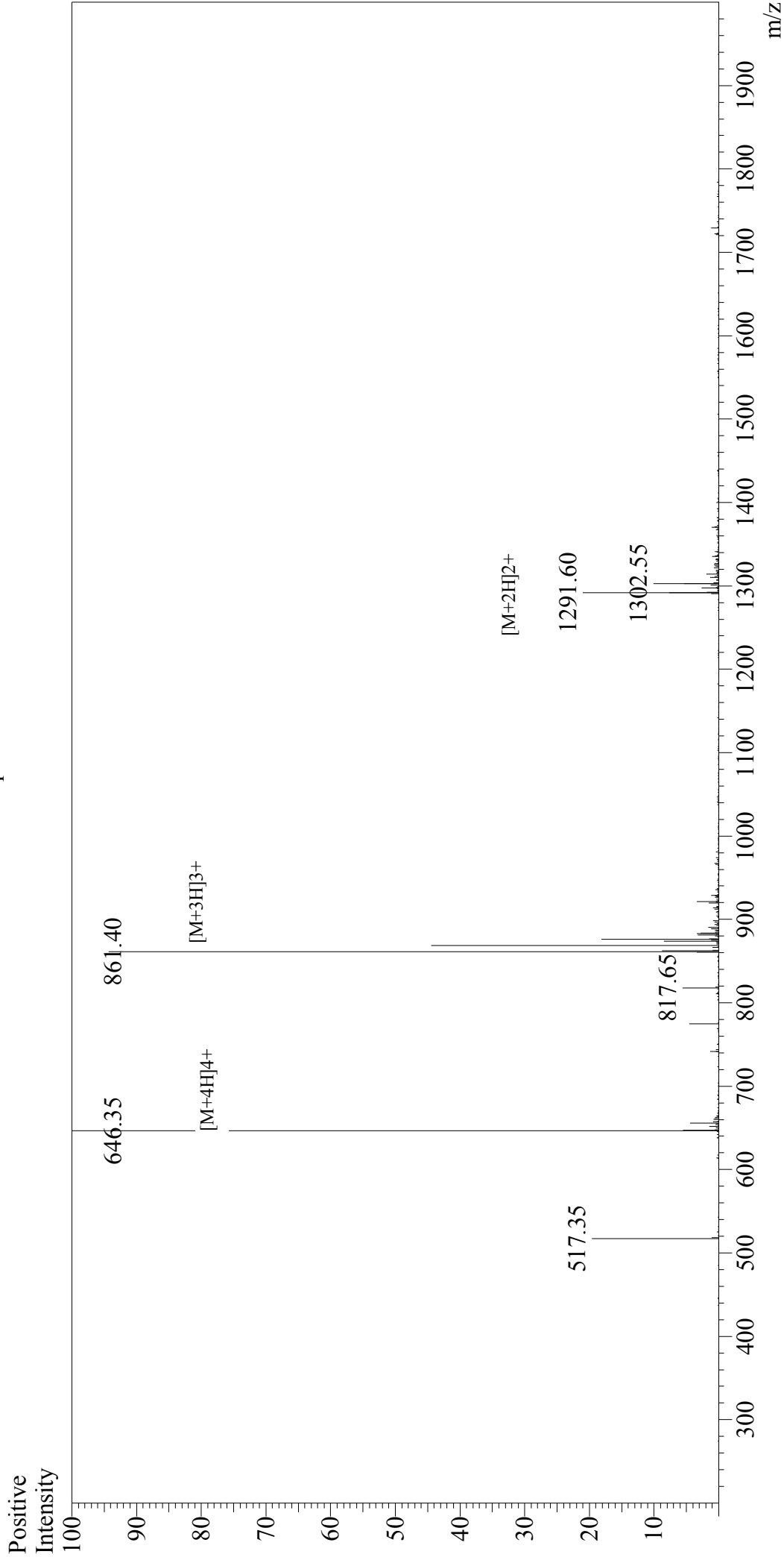


# Mass Spectrum



Sample Information  
User : Gary  
Month-Day Processed : 08/24/16  
Time Processed : 10:34:07  
Injection Volume : 0.2  
Sample Name : Myelin Oligodendrocyte Glycoprotein Peptide (35-55), mouse, rat  
Cat No. : RP10245  
Lot No. : PE4781608  
Theoretical MW : 2581.98  
Observed MW : 2581.40

Interface : ESI  
Nebulizing Gas Flow : 1.5L/min  
CDL Temp : 250°C  
Block Temp : 200°C

Interface Bias : +4.5kV  
Drying Gas Flow : 5 L/min  
T.Flow : 0.2ml/min  
B.conc : 50%H2O/50%MeOH