

Sample Name :Proctolin  
 Cat. No. :RP 10475  
 Lot. No. : PE7851603

Pump A : 0.065% trifluoroacetic in 100% water (v/v)  
 Pump B : 0.05% trifluoroacetic in 100% acetonitrile (v/v)  
 Total Flow:1 ml/min  
 Wavelength:220 nm

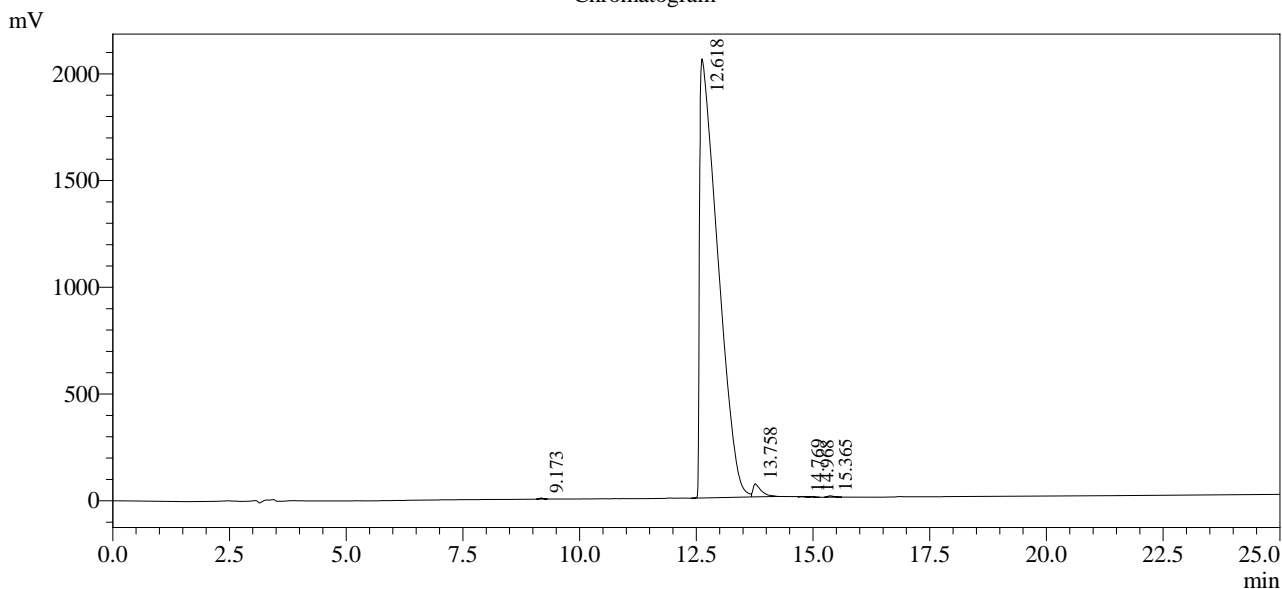
| Time  | Unit       | Command      | Value | Comment |
|-------|------------|--------------|-------|---------|
| 0.01  | Pumps      | Pump B Conc. | 5     |         |
| 25.00 | Pumps      | Pump B Conc. | 65    |         |
| 25.01 | Pumps      | Pump B Conc. | 95    |         |
| 31.00 | Pumps      | Pump B Conc. | 95    |         |
| 31.01 | Pumps      | Pump B Conc. | 5     |         |
| 40.00 | Pumps      | Pump B Conc. | 5     |         |
| 40.01 | Controller | Stop         |       |         |

<<Column Performance>>

<Detector A>

Column : Alltima™ C18 4.6 x 250 mm

Chromatogram



1 Det.A Ch1 / 220nm

Peak Table

Detector A Ch1 220nm

| Peak# | Ret. Time | Area     | Height  | Area %  |
|-------|-----------|----------|---------|---------|
| 1     | 9.173     | 30062    | 5220    | 0.053   |
| 2     | 12.618    | 55822817 | 2057424 | 98.508  |
| 3     | 13.758    | 744150   | 61319   | 1.313   |
| 4     | 14.769    | 5631     | 1696    | 0.010   |
| 5     | 14.968    | 8265     | 1593    | 0.015   |
| 6     | 15.365    | 57160    | 6256    | 0.101   |
| Total |           | 56668085 | 2133507 | 100.000 |