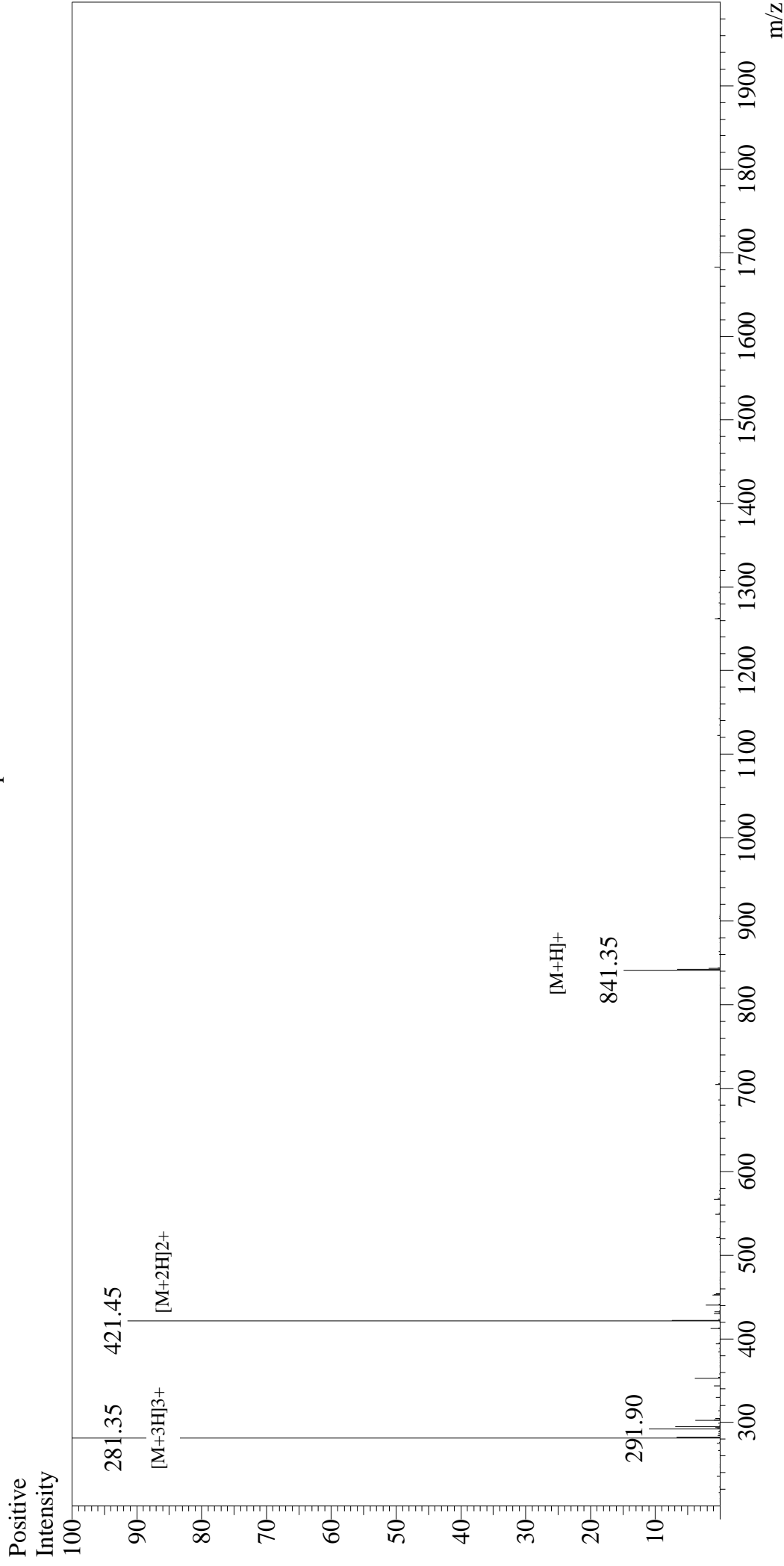


Mass Spectrum



Sample Information

User : Gary
Month-Day Processed : 01/23/16
Time Processed : 11:58:24
Injection Volume : 0.2
Sample Name : Hexa-His
Cat No. : RP11737
Lot No. : PE1711601
Theoretical MW : 840.85
Observed MW : 841.05

Interface : ESI
Nebulizing Gas Flow : 1.5L/min
CDL Temp : 250°C
Block Temp : 200°C

Interface Bias : +4.5kV
Drying Gas Flow : 5 L/min
T.Flow : 0.2ml/min
B.conc : 50%H2O/50%MeOH