

# Catalog Antibodies

- 1 THE™ Elite Antibodies
- 2 Loading Control Antibodies
- 3 Epitope Tag Antibodies
- 4 Phospho-Specific Antibodies
- 5 MiniFresh® Antibodies
- 6 Other Antibodies
- 7 Related Products



**All Correspondence**  
GenScript USA Inc.  
120 Centennial Ave.  
Piscataway, NJ 08854  
US

**Accounts Payable/Receivable**  
Accounting Department  
GenScript Corp.  
120 Centennial Ave.  
Piscataway, NJ 08854  
US

**Tel (Toll-Free):** 1-877-436-7274  
**Tel:** 1-732-885-9188, 1-732-885-9688  
**Fax:** 1-732-210-0262, 1-732-885-5878  
**Web:** [www.genscript.com](http://www.genscript.com)  
**Secure Web Server:** [https://www.genscript.com/ssl-bin/secure\\_data](https://www.genscript.com/ssl-bin/secure_data)

**Email:**  
For Sales: [order@genscript.com](mailto:order@genscript.com)  
For General Inquiry: [info@genscript.com](mailto:info@genscript.com)  
For Molecular Biology: [gene@genscript.com](mailto:gene@genscript.com)  
For siRNA: [siRNA@genscript.com](mailto:siRNA@genscript.com)  
For Peptides: [peptide@genscript.com](mailto:peptide@genscript.com)  
For Proteins: [protein@genscript.com](mailto:protein@genscript.com)  
For Antibodies: [antibody@genscript.com](mailto:antibody@genscript.com)  
For Chemicals: [chemical@genscript.com](mailto:chemical@genscript.com)  
For Informatics Support: [support@genscript.com](mailto:support@genscript.com)  
For Technical Support: [support@genscript.com](mailto:support@genscript.com)



*Your Innovation Partner in Drug Discovery!*

# Catalog Antibodies

Reliable, well-selected antibodies are one of the most effective tools available to researchers when it comes to identifying and locating specific proteins. Increasingly, antibodies have been employed to directly diagnose and treat diseases. GenScript is proud to provide a comprehensive catalog of antibodies applicable to all areas of biological research and drug discovery. We have already supplied antibodies to customers around the world, including several of the top ten companies in the pharmaceutical industry. Our popular antibody brands such as THE™ Elite Antibodies and MiniFresh® Antibodies are designed to fit into our customers' existing research practices, removing waste and stress from the research process.

GenScript's comprehensive catalog of antibodies includes the following highlights:

- **Epitope Tag Antibodies:** Over 30 epitope tag antibodies are provided.
- **Phospho-Specific Antibodies:** We offer phospho-specific antibodies for thirteen signaling pathways.
- **THE™ Elite Antibodies:** The most effective and sensitive antibodies for your most demanding applications.
- **Loading Control Antibodies:** Polyclonal and monoclonal loading control antibodies against GAPDH,  $\alpha$ -tubulin,  $\alpha$ -actin,  $\beta$ -actin for several species
- **MiniFresh® Antibodies:** We provide small-package antibodies to keep your options open and your supplies fresh. Most of the antibodies are sold for only \$50 to reduce your research costs.

([http://www.genscript.com/cgi-bin/products/antibody\\_list\\_price\\_below\\_70.cgi](http://www.genscript.com/cgi-bin/products/antibody_list_price_below_70.cgi))

If you cannot find your antibody on our list, try our **Express Antibody™ Service**, and receive any polyclonal antibody in only 5-8 weeks.



## Quick Reference Guide

|  |     |
|--|-----|
| THE™ Elite Antibodies                    | P1  |
| -----                                    |     |
| Loading Control Antibodies               | P2  |
| -----                                    |     |
| Epitope Tag Antibodies                   | P3  |
| -----                                    |     |
| Phospho-Specific Antibodies              | P6  |
| -----                                    |     |
| MiniFresh® Antibodies                    | P7  |
| -----                                    |     |
| Other Antibodies                         | P8  |
| -----                                    |     |
| Protein Purification Resins and MagBeads | P9  |
| -----                                    |     |
| Protein Markers                          | P11 |

## THE™ Elite Antibodies

### >> Description:

GenScript is proud to present THE™ Elite Antibody series, the most precise and effective antibodies that meet requirements of even the most challenging research.

THE™ stands for THE unmistakable, THE irreplaceable, and THE best quality. To produce THE™ Elite Antibodies, the most productive and stable hybridoma cell clones were selected. THE™ Elite Antibodies are then isolated from the cell line that shows the highest specificity against the corresponding antigen.

Do you worry about small samples, partially exposed tags, fusion-protein denaturation, or any other obstacles? Order GenScript's THE™ Elite Antibodies, and you are on the way to solve your problems.

GenScript plans to keep expanding THE™ Elite Antibody series. So visit our website often.

### >> Key Features:

- **Ultra Specificity:** No cross-reactivity
- **Ultra Affinity:** Ultra-low dissociation constant
- **Ultra Reactivity:** Recognizes and binds even partially exposed terminal and internal tags
- **Ultra Clear Background:** Zero background
- **Ultra Convenience:** No secondary antibody needed for conjugated antibodies
- **Ultra Stability:** Stable in lyophilized form for at least two year

### >> Product Overview:

THE™ Elite Antibody series now covers two major categories: epitope tag antibodies and loading controls. For each type, we provide both unconjugated and conjugated forms.

Please check the webpage ([http://www.genscript.com/THE\\_antibody.html](http://www.genscript.com/THE_antibody.html)) for detailed information.

| Cat. No. | Product Name                 | Applications            | Size   | Price    |
|----------|------------------------------|-------------------------|--------|----------|
| A00186   | THE™ Anti-His mAb            | ELISA, WB, IP, IF, FACS | 100 µg | \$374.50 |
| A00612   | THE™ Anti-His [HRP] mAb      | ELISA, WB               | 100 µg | \$410.20 |
| A00613   | THE™ Anti-His [Biotin] mAb   | ELISA, WB               | 100 µg | \$410.20 |
| A00704   | THE™ Anti-c-Myc mAb          | ELISA, WB, IP, IF       | 40 µg  | \$69.00  |
|          |                              |                         | 200 µg | \$311.00 |
| A00863   | THE™ Anti-c-Myc [HRP] mAb    | ELISA, WB, IP, IF       | 40 µg  | \$74.00  |
|          |                              |                         | 200 µg | \$333.00 |
| A00864   | THE™ Anti-c-Myc [Biotin] mAb | ELISA, WB, IP, IF       | 40 µg  | \$74.00  |
|          |                              |                         | 200 µg | \$333.00 |
| A00865   | THE™ Anti-GST mAb            | ELISA, WB, IP           | 40 µg  | \$69.00  |
|          |                              |                         | 200 µg | \$311.00 |
| A00866   | THE™ Anti-GST [HRP] mAb      | ELISA, WB, IP           | 40 µg  | \$74.00  |
|          |                              |                         | 200 µg | \$333.00 |
| A00867   | THE™ Anti-GST [Biotin] mAb   | ELISA, WB, IP           | 40 µg  | \$74.00  |
|          |                              |                         | 200 µg | \$333.00 |
| A00702   | THE™ Anti-β-Actin mAb        | ELISA, WB               | 40 µg  | \$69.00  |
|          |                              |                         | 200 µg | \$311.00 |
| A00730   | THE™ Anti-β-Actin [HRP] mAb  | ELISA, WB               | 40 µg  | \$74.00  |
|          |                              |                         | 200 µg | \$333.00 |

## Loading Control Antibodies

### >> Description:

Loading controls are used in Western blots for two main purposes: 1) To estimate relative amounts of total protein loaded in each lane. (This information is needed to determine if the difference in levels of the protein of interest in different samples is due to loading and transfer errors or to real changes in protein expression.) 2) To troubleshoot the Western blotting procedure. The proteins that are usually used as loading controls are known to be constitutively and stably expressed at high levels in almost all tissues and cells. They include housekeeping proteins, such as GAPDH, tubulin, and actin. GenScript is proud to provide a wide selection of polyclonal and monoclonal loading control antibodies for GAPDH, α-tubulin, α-actin, β-actin for several species. HRP- and biotin-conjugated versions of these antibodies are also available.

To simplify the loading control detection process, GenScript offers a series of One-Step Western™ Multiplex Kits ([http://www.genscript.com/western\\_multiplex\\_kit.html](http://www.genscript.com/western_multiplex_kit.html)). These kits allow simultaneous detection of both the protein of interest and the loading control in a simple one-hour procedure.

### >> Product Overview:

| Cat. No. | Product Name                 | Applications | Size   | Price     |
|----------|------------------------------|--------------|--------|-----------|
| A00191   | Goat Anti-GAPDH pAb          | ELISA, WB    | 40 µg  | \$50.00   |
|          |                              |              | 200 µg | \$225.00  |
| A00192   | Goat Anti-GAPDH [HRP] pAb    | WB           | 40 µg  | \$60.00   |
|          |                              |              | 200 µg | \$270.00  |
| A00915   | Goat Anti-GAPDH [Biotin] pAb | WB           | 40 µg  | \$60.00   |
|          |                              |              | 200 µg | \$270.00  |
| A00084   | Mouse Anti GAPDH mAb         | WB, IF       | 100 µg | \$259.00  |
| A00885   | Rabbit Anti-α-Actin-1 pAb    | WB, IF       | 40 µg  | \$50.00   |
|          |                              |              | 200 µg | \$225.00  |
| A00702   | THE™ Anti-β-Actin mAb        | ELISA, WB    | 40 µg  | \$69.00*  |
|          |                              |              | 200 µg | \$311.00* |
| A00730   | THE™ Anti-β-Actin [HRP] mAb  | ELISA, WB    | 40 µg  | \$74.00*  |
|          |                              |              | 200 µg | \$333.00* |
| A00200   | Mouse Anti α-Tubulin mAb     | ELISA, WB    | 100 µg | \$225.00  |

### >> Note:

\* These products are in promotion line.

Please check the webpage ([http://www.genscript.com/loading\\_control\\_antibody.html](http://www.genscript.com/loading_control_antibody.html)) for detailed information.

## Epitope Tag Antibodies

### >> Description:

An epitope is an antigenic determinant, a biological structure or sequence to which an antibody binds. Recombinant DNA technology allows us to construct fusion proteins that consist of a gene of interest and an epitope tag. These fusion proteins can be identified and purified by using epitope tag specific antibodies. The most commonly used epitope tags include 6xHistidine, Hemagglutinin, c-Myc, GST, and DYKDDDDK. GenScript offers highly specific antibodies to all of these epitope tags. All GenScript antibodies are carefully tested by many methods to ensure their specificity and efficient performance.

### >> Products:

| Cat. No. | Product                            | Applications   | Size   | Price    |
|----------|------------------------------------|----------------|--------|----------|
| A00203   | Goat Anti-HA-tag [Biotin] pAb      | ELISA, WB      | 40 µg  | \$55.00  |
| A00203   | Goat Anti-HA-tag [Biotin] pAb      | ELISA, WB      | 200 µg | \$247.50 |
| A00169   | Goat Anti-HA-tag [HRP] pAb         | ELISA, WB      | 40 µg  | \$55.00  |
| A00169   | Goat Anti-HA-tag [HRP] pAb         | ELISA, WB      | 200 µg | \$247.50 |
| A00168   | Goat Anti-HA-tag pAb               | ELISA, WB      | 40 µg  | \$50.00  |
| A00168   | Goat Anti-HA-tag pAb               | ELISA, WB      | 200 µg | \$225.00 |
| A00129   | Goat Anti-Trx-tag pAb              | ELISA, WB      | 40 µg  | \$50.00  |
| A00129   | Goat Anti-Trx-tag pAb              | ELISA, WB      | 200 µg | \$225.00 |
| A00099   | Goat Anti-V5-tag pAb               | ELISA, WB      | 100 µg | \$125.00 |
| A00185   | Mouse Anti-cGFP-tag mAb            | ELISA, WB      | 40 µg  | \$50.00  |
| A00185   | Mouse Anti-cGFP-tag mAb            | ELISA, WB      | 200 µg | \$225.00 |
| A00013   | Mouse Anti-DYKDDDDK-tag mAb        | WB, IP, IHC    | 500 µg | \$220.00 |
| A00013   | Mouse Anti-DYKDDDDK-tag mAb        | WB, IP, IHC    | 1 mg   | \$410.00 |
| A00886   | Mouse Anti-GFP-tag [HRP] mAb       | ELISA, WB      | 40 µg  | \$55.00  |
| A00886   | Mouse Anti-GFP-tag [HRP] mAb       | ELISA, WB      | 200 µg | \$247.50 |
| A00189   | Mouse Anti-HA-tag mAb              | ELISA, WB      | 40 µg  | \$50.00  |
| A00189   | Mouse Anti-HA-tag mAb              | ELISA, WB      | 200 µg | \$225.00 |
| A00087   | Mouse Anti-HA-tag mAb              | WB, IP, IHC    | 100 µg | \$170.00 |
| A00190   | Mouse Anti-MBP-tag mAb             | ELISA, WB      | 40 µg  | \$50.00  |
| A00190   | Mouse Anti-MBP-tag mAb             | ELISA, WB      | 200 µg | \$225.00 |
| A00180   | Mouse Anti-Trx-tag mAb             | ELISA, WB      | 40 µg  | \$50.00  |
| A00180   | Mouse Anti-Trx-tag mAb             | ELISA, WB      | 200 µg | \$225.00 |
| A00641   | Mouse Anti-V5-tag mAb              | ELISA, WB, IHC | 100 µg | \$120.00 |
| A00628   | Rabbit Anti-AU1-tag pAb            | ELISA, WB      | 40 µg  | \$50.00  |
| A00628   | Rabbit Anti-AU1-tag pAb            | ELISA, WB      | 200 µg | \$225.00 |
| A00674   | Rabbit Anti-Avi-tag pAb            | ELISA, WB      | 40 µg  | \$50.00  |
| A00674   | Rabbit Anti-Avi-tag pAb            | ELISA, WB      | 200 µg | \$225.00 |
| A00638   | Rabbit Anti-B-tag pAb              | ELISA, WB      | 40 µg  | \$50.00  |
| A00638   | Rabbit Anti-B-tag pAb              | ELISA, WB      | 200 µg | \$225.00 |
| A00635   | Rabbit Anti-CBP-tag pAb            | ELISA, WB      | 40 µg  | \$50.00  |
| A00635   | Rabbit Anti-CBP-tag pAb            | ELISA, WB      | 200 µg | \$225.00 |
| A00204   | Rabbit Anti-c-Myc-tag [Biotin] pAb | ELISA, WB      | 40 µg  | \$55.00  |
| A00204   | Rabbit Anti-c-Myc-tag [Biotin] pAb | ELISA, WB      | 200 µg | \$247.50 |
| A00173   | Rabbit Anti-c-Myc-tag [HRP] pAb    | ELISA, WB      | 40 µg  | \$55.00  |
| A00173   | Rabbit Anti-c-Myc-tag [HRP] pAb    | ELISA, WB      | 200 µg | \$247.50 |
| A00172   | Rabbit Anti-c-Myc-tag pAb          | ELISA, WB      | 40 µg  | \$50.00  |

| Cat. No. | Product                              | Applications | Size   | Price    |
|----------|--------------------------------------|--------------|--------|----------|
| A00172   | Rabbit Anti-c-Myc-tag pAb            | ELISA, WB    | 200 µg | \$225.00 |
| A00676   | Rabbit Anti-DDDDK-tag pAb            | ELISA, WB    | 40 µg  | \$50.00  |
| A00676   | Rabbit Anti-DDDDK-tag pAb            | ELISA, WB    | 200 µg | \$225.00 |
| A00170   | Rabbit Anti-DYKDDDDK-tag pAb         | ELISA, WB    | 40 µg  | \$50.00  |
| A00170   | Rabbit Anti-DYKDDDDK-tag pAb         | ELISA, WB    | 200 µg | \$225.00 |
| A00876   | Rabbit Anti-E2-tag [HRP] pAb         | ELISA, WB    | 40 µg  | \$55.00  |
| A00876   | Rabbit Anti-E2-tag [HRP] pAb         | ELISA, WB    | 200 µg | \$247.50 |
| A00630   | Rabbit Anti-E2-tag pAb               | ELISA, WB    | 40 µg  | \$50.00  |
| A00630   | Rabbit Anti-E2-tag pAb               | ELISA, WB    | 200 µg | \$225.00 |
| A00874   | Rabbit Anti-E-tag [HRP] pAb          | ELISA, WB    | 40 µg  | \$55.00  |
| A00874   | Rabbit Anti-E-tag [HRP] pAb          | ELISA, WB    | 200 µg | \$247.50 |
| A00631   | Rabbit Anti-E-tag pAb                | ELISA, WB    | 40 µg  | \$50.00  |
| A00631   | Rabbit Anti-E-tag pAb                | ELISA, WB    | 200 µg | \$225.00 |
| A00202   | Rabbit Anti-GST-tag [Biotin] pAb     | ELISA, WB    | 40 µg  | \$55.00  |
| A00202   | Rabbit Anti-GST-tag [Biotin] pAb     | ELISA, WB    | 200 µg | \$247.50 |
| A00130   | Rabbit Anti-GST-tag [HRP] pAb        | ELISA, WB    | 40 µg  | \$55.00  |
| A00130   | Rabbit Anti-GST-tag [HRP] pAb        | ELISA, WB    | 200 µg | \$247.50 |
| A00097   | Rabbit Anti-GST-tag pAb              | ELISA, WB    | 40 µg  | \$50.00  |
| A00097   | Rabbit Anti-GST-tag pAb              | ELISA, WB    | 200 µg | \$225.00 |
| A00636   | Rabbit Anti-HAT-tag pAb              | ELISA, WB    | 40 µg  | \$50.00  |
| A00636   | Rabbit Anti-HAT-tag pAb              | ELISA, WB    | 200 µg | \$225.00 |
| A00174   | Rabbit Anti-His-tag pAb              | ELISA, WB    | 40 µg  | \$50.00  |
| A00174   | Rabbit Anti-His-tag pAb              | ELISA, WB    | 200 µg | \$225.00 |
| A00624   | Rabbit Anti-HSV-tag pAb              | ELISA, WB    | 40 µg  | \$50.00  |
| A00624   | Rabbit Anti-HSV-tag pAb              | ELISA, WB    | 200 µg | \$225.00 |
| A00873   | Rabbit Anti-KT3 [HRP] pAb            | ELISA, WB    | 40 µg  | \$55.00  |
| A00873   | Rabbit Anti-KT3 [HRP] pAb            | ELISA, WB    | 200 µg | \$247.50 |
| A00632   | Rabbit Anti-KT3-tag pAb              | ELISA, WB    | 40 µg  | \$50.00  |
| A00632   | Rabbit Anti-KT3-tag pAb              | ELISA, WB    | 200 µg | \$225.00 |
| A00681   | Rabbit Anti-MAT-tag pAb              | ELISA, WB    | 40 µg  | \$50.00  |
| A00681   | Rabbit Anti-MAT-tag pAb              | ELISA, WB    | 200 µg | \$225.00 |
| A00637   | Rabbit Anti-Protein C (HPC4)-tag pAb | ELISA, WB    | 40 µg  | \$50.00  |
| A00637   | Rabbit Anti-Protein C (HPC4)-tag pAb | ELISA, WB    | 200 µg | \$225.00 |
| A00682   | Rabbit Anti-RFP-tag pAb              | ELISA, WB    | 40 µg  | \$50.00  |
| A00682   | Rabbit Anti-RFP-tag pAb              | ELISA, WB    | 200 µg | \$225.00 |
| A00679   | Rabbit Anti-S1-tag pAb               | ELISA, WB    | 40 µg  | \$50.00  |
| A00679   | Rabbit Anti-S1-tag pAb               | ELISA, WB    | 200 µg | \$225.00 |
| A00684   | Rabbit Anti-SNAP-tag pAb             | ELISA, WB    | 40 µg  | \$50.00  |
| A00684   | Rabbit Anti-SNAP-tag pAb             | ELISA, WB    | 200 µg | \$225.00 |
| A00725   | Rabbit Anti-SRT-tag pAb              | ELISA, WB    | 40 µg  | \$50.00  |
| A00725   | Rabbit Anti-SRT-tag pAb              | ELISA, WB    | 200 µg | \$225.00 |
| A00625   | Rabbit Anti-S-tag pAb                | ELISA, WB    | 40 µg  | \$50.00  |
| A00625   | Rabbit Anti-S-tag pAb                | ELISA, WB    | 200 µg | \$225.00 |
| A00626   | Rabbit Anti-Strep-tag II pAb         | ELISA, WB    | 40 µg  | \$50.00  |
| A00626   | Rabbit Anti-Strep-tag II pAb         | ELISA, WB    | 200 µg | \$225.00 |
| A00640   | Rabbit Anti-SUMO-tag pAb             | ELISA, WB    | 500 µg | \$145.00 |
| A00677   | Rabbit Anti-Tag-100-tag pAb          | ELISA, WB    | 40 µg  | \$50.00  |
| A00677   | Rabbit Anti-Tag-100-tag pAb          | ELISA, WB    | 200 µg | \$225.00 |
| A00683   | Rabbit Anti-TAP-tag pAb              | ELISA, WB    | 40 µg  | \$50.00  |

## Epitope Tag Antibodies

### >> Products:

| Cat. No. | Product                         | Applications            | Size   | Price    |
|----------|---------------------------------|-------------------------|--------|----------|
| A00683   | Rabbit Anti-TAP-tag pAb         | ELISA, WB               | 200 µg | \$225.00 |
| A00680   | Rabbit Anti-Universal-tag pAb   | ELISA, WB               | 40 µg  | \$50.00  |
| A00680   | Rabbit Anti-Universal-tag pAb   | ELISA, WB               | 200 µg | \$225.00 |
| A00877   | Rabbit Anti-V5-tag [HRP] pAb    | ELISA, WB               | 40 µg  | \$55.00  |
| A00877   | Rabbit Anti-V5-tag [HRP] pAb    | ELISA, WB               | 200 µg | \$247.50 |
| A00623   | Rabbit Anti-V5-tag pAb          | ELISA, WB               | 40 µg  | \$50.00  |
| A00623   | Rabbit Anti-V5-tag pAb          | ELISA, WB               | 200 µg | \$225.00 |
| A00872   | Rabbit Anti-VSV-G-tag [HRP] pAb | ELISA, WB               | 40 µg  | \$55.00  |
| A00872   | Rabbit Anti-VSV-G-tag [HRP] pAb | ELISA, WB               | 200 µg | \$247.50 |
| A00199   | Rabbit Anti-VSV-G-tag pAb       | ELISA, WB               | 40 µg  | \$50.00  |
| A00199   | Rabbit Anti-VSV-G-tag pAb       | ELISA, WB               | 200 µg | \$225.00 |
| A00864   | THE™ Anti-c-Myc [Biotin] mAb    | ELISA, WB, IP, IF       | 40 µg  | \$74.00  |
| A00864   | THE™ Anti-c-Myc [Biotin] mAb    | ELISA, WB, IP, IF       | 200 µg | \$333.00 |
| A00863   | THE™ Anti-c-Myc [HRP] mAb       | ELISA, WB, IP, IF       | 40 µg  | \$74.00  |
| A00863   | THE™ Anti-c-Myc [HRP] mAb       | ELISA, WB, IP, IF       | 200 µg | \$333.00 |
| A00704   | THE™ Anti-c-Myc mAb             | ELISA, WB, IP, IF       | 40 µg  | \$69.00  |
| A00704   | THE™ Anti-c-Myc mAb             | ELISA, WB, IP, IF       | 200 µg | \$311.00 |
| A00866   | THE™ Anti-GST [HRP] mAb         | ELISA, WB, IP           | 40 µg  | \$74.00  |
| A00866   | THE™ Anti-GST [HRP] mAb         | ELISA, WB, IP           | 200 µg | \$333.00 |
| A00865   | THE™ Anti-GST mAb               | ELISA, WB, IP           | 40 µg  | \$69.00  |
| A00865   | THE™ Anti-GST mAb               | ELISA, WB, IP           | 200 µg | \$311.00 |
| A00867   | THE™ Anti-GST [Biotin] mAb      | ELISA, WB, IP           | 40 µg  | \$74.00  |
| A00867   | THE™ Anti-GST [Biotin] mAb      | ELISA, WB, IP           | 200 µg | \$333.00 |
| A00186   | THE™ Anti-His mAb               | ELISA, WB, IP, IF, FACS | 100 µg | \$374.50 |
| A00613   | THE™ Anti-His [Biotin] mAb      | ELISA, WB               | 100 µg | \$410.20 |
| A00612   | THE™ Anti-His [HRP] mAb         | ELISA, WB               | 100 µg | \$410.20 |

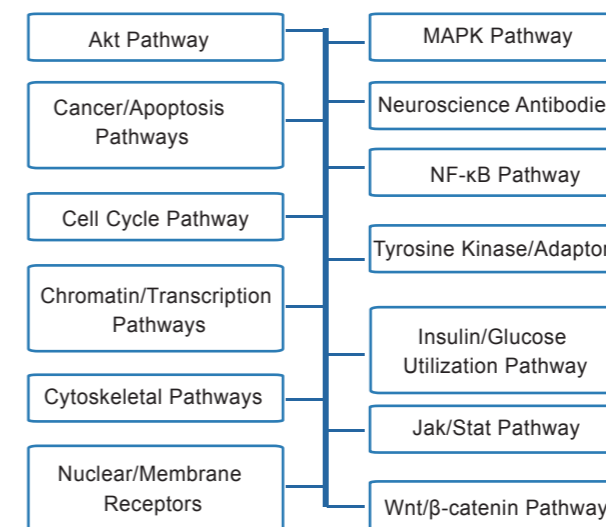
## Phospho-Specific Antibodies

### >> Description:

Protein phosphorylation-dephosphorylation is one of the major signaling mechanisms used to modulate the functional properties of proteins involved in gene expression, cell adhesion, cell proliferation, cell differentiation, and the cell cycle. The determination of the state of phosphorylation of specific proteins is very important in the studies of signaling pathways and protein functions. Phospho-specific antibodies, which can discriminate between the phosphorylated and non-phosphorylated forms of a given protein, enable easy qualitative and quantitative detection of phosphorylated proteins by Western blot, ELISA and immunohistochemical methods.

GenScript's phospho-specific antibodies are affinity-purified and tested for cross-reactivity with the non-phosphorylated forms of proteins. They recognize the phosphorylated amino acids in the context of the surrounding amino acid sequence. Using a combination of pan-antibody and phospho-specific antibody, a researcher can assess the degree of phosphorylation of any given protein.

GenScript provides full sets of phospho-specific/pan antibody pairs for several signaling pathways. These antibodies are suitable for most applications, including Western blot analysis, ELISA, and immunocytochemical assays.



### >> Note:

Several antibodies will be included in more than one category. Please check the webpage ([http://www.genscript.com/phospho\\_specific\\_antibody.html](http://www.genscript.com/phospho_specific_antibody.html)) for detailed information.

## Other Antibodies

| Cat. No. | Product   | Applications   | Size   | Price    |
|----------|---|----------------|--------|----------|
| A00806   | Mouse Anti-APP mAb  | ELISA, WB, IHC | 40 µg  | \$55.00  |
| A00804   | Mouse Anti-Calcyclin mAb                                  | ELISA, WB, IHC | 40 µg  | \$55.00  |
| A00829   | Mouse Anti-CD31 mAb                                       | ELISA, WB, IHC | 40 µg  | \$55.00  |
| A00814   | Mouse Anti-CK1 mAb  | ELISA, WB, IHC | 40 µg  | \$55.00  |
| A00819   | Mouse Anti-Desmin mAb                                     | ELISA, WB, IHC | 40 µg  | \$55.00  |
| A00808   | Mouse Anti-Dynamin-1 mAb                                  | ELISA, WB, IHC | 40 µg  | \$55.00  |
| A00817   | Mouse Anti-GSTP1 mAb                                      | ELISA, WB, IHC | 40 µg  | \$55.00  |
| A00832   | Mouse Anti-IGF1R mAb                                      | ELISA, WB, IHC | 40 µg  | \$55.00  |
| A00802   | Mouse Anti-LSD1 mAb                                       | ELISA, WB, IHC | 40 µg  | \$55.00  |
| A00813   | Mouse Anti-Lyn mAb  | ELISA          | 40 µg  | \$55.00  |
| A00818   | Mouse Anti-MAPK10 mAb                                     | ELISA, WB, IHC | 40 µg  | \$55.00  |
| A00799   | Mouse Anti-MSH2 mAb                                       | ELISA, WB, IHC | 40 µg  | \$55.00  |
| A00820   | Mouse Anti-Myoglobin mAb                                  | ELISA, WB, IHC | 40 µg  | \$55.00  |
| A00796   | Mouse Anti-Rab25 mAb                                      | ELISA, WB, IHC | 40 µg  | \$55.00  |
| A00830   | Mouse Anti-RSK1 mAb                                       | ELISA, WB, IHC | 40 µg  | \$55.00  |
| A00812   | Mouse Anti-SNCG mAb                                       | ELISA, WB, IHC | 40 µg  | \$55.00  |
| A00809   | Mouse Anti-SRA mAb  | ELISA, WB, IHC | 40 µg  | \$55.00  |
| A00824   | Mouse Anti-Vimentin mAb                                   | ELISA          | 40 µg  | \$55.00  |
| A00918   | Rabbit Anti-Beta-1,3-GalTase 2 pAb                        | ELISA, WB      | 200 µg | \$225.00 |
| A00971   | Rabbit Anti-LC3A/Apg-8 pAb                                | WB             | 40 µg  | \$50.00  |
| A00971   | Rabbit Anti-LC3A/Apg-8 pAb                                | WB             | 200 µg | \$225.00 |
| A00933   | Rabbit Anti-Niban pAb                                     | WB             | 40 µg  | \$50.00  |
| A00933   | Rabbit Anti-Niban pAb                                     | WB             | 200 µg | \$225.00 |
| A00961   | Rabbit Anti-PGK1 pAb                                      | ELISA, WB      | 40 µg  | \$50.00  |
| A00961   | Rabbit Anti-PGK1 pAb                                      | ELISA, WB      | 200 µg | \$225.00 |
| A00706   | Rabbit Anti-prohibitin pAb                                | WB             | 40 µg  | \$50.00  |
| A00706   | Rabbit Anti-prohibitin pAb                                | WB             | 200 µg | \$225.00 |
| A00744   | Mouse Anti-Foxp3 mAb                                      | WB, IHC        | 40 µg  | \$55.00  |
| A00740   | Mouse Anti-Human CD10 mAb                                 | ELISA, IHC     | 40 µg  | \$55.00  |
| A00741   | Mouse Anti-Human CD14 mAb                                 | ELISA, IHC     | 40 µg  | \$55.00  |
| A00742   | Mouse Anti-Human CD19 mAb                                 | ELISA, WB, IHC | 40 µg  | \$55.00  |
| A00023   | Mouse Anti-Human CD3 (ε chain) mAb                        | ELISA, WB      | 500 µg | \$220.00 |
| A00023   | Mouse Anti-Human CD3 (ε chain) mAb                        | ELISA, WB      | 1 mg   | \$410.00 |
| A00024   | Mouse Anti-Human CD4 mAb                                  | ELISA, WB      | 500 µg | \$220.00 |
| A00024   | Mouse Anti-Human CD4 mAb                                  | ELISA, WB      | 1 mg   | \$410.00 |
| A00026   | Mouse Anti-Human CD5 mAb                                  | ELISA, WB      | 500 µg | \$220.00 |
| A00026   | Mouse Anti-Human CD5 mAb                                  | ELISA, WB      | 1 mg   | \$410.00 |
| A00027   | Mouse Anti-Human CD8 mAb                                  | ELISA, WB      | 500 µg | \$220.00 |
| A00027   | Mouse Anti-Human CD8 mAb                                  | ELISA, WB      | 1 mg   | \$410.00 |
| A00060   | Rat Anti-Mouse B220 (B cell specific isoform of CD45) mAb | ELISA, WB      | 500 µg | \$220.00 |
| A00060   | Rat Anti-Mouse B220 (B cell specific isoform of CD45) mAb | ELISA, WB      | 1 mg   | \$410.00 |
| A00067   | Rat Anti-Mouse B7-1 (CD80) mAb                            | ELISA, WB      | 500 µg | \$220.00 |
| A00067   | Rat Anti-Mouse B7-1 (CD80) mAb                            | ELISA, WB      | 1 mg   | \$410.00 |
| A00066   | Rat Anti-Mouse CD11b [FITC] mAb                           | ELISA          | 500 µg | \$350.00 |
| A00066   | Rat Anti-Mouse CD11b [FITC] mAb                           | ELISA          | 1 mg   | \$560.00 |
| A00063   | Rat Anti-Mouse CD3 mAb                                    | ELISA, WB      | 500 µg | \$220.00 |
| A00063   | Rat Anti-Mouse CD3 mAb                                    | ELISA, WB      | 1 mg   | \$410.00 |
| A00064   | Rat Anti-Mouse CD4 mAb                                    | ELISA, WB      | 500 µg | \$220.00 |
| A00064   | Rat Anti-Mouse CD4 mAb                                    | ELISA, WB      | 1 mg   | \$410.00 |
| A00068   | Rat Anti-Mouse Thy-1 (CD90) mAb                           | ELISA, WB      | 500 µg | \$220.00 |

# MiniFresh® \mi-nē 'fresh \ noun.

GenScript's fresh antibodies that are in small packages to help you reduce your research costs.



## MiniFresh® Antibodies

### MiniFresh® = \$50 antibodies

We provide small-package antibodies to keep your options open and your supplies fresh. Most of the antibodies are sold for only \$50 to reduce your research costs.

- Small, because the MiniFresh® helps you to reduce your research costs;
- Small, with big performance that helps you get quality results;
- Small, because we concern about your costs and it is from GenScript.

Please check the MiniFresh® webpage for the complete \$50 antibody list.  
([http://www.genscript.com/cgi-bin/products/antibody\\_list\\_price\\_below\\_70.cgi](http://www.genscript.com/cgi-bin/products/antibody_list_price_below_70.cgi))

## Protein Purification Resins and MagBeads

### >> Description:

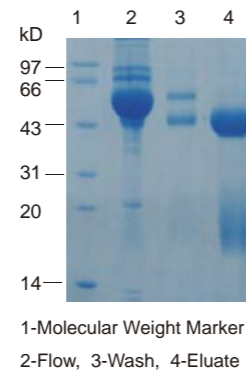
GenScript provides a series of protein purification resins and MagBeads that allow efficient and reliable purification of target proteins and antibodies from biological samples including cell lysates and culture supernatants. These resins and beads are covalently cross-linked to or coated with proteins A, G, or L, antibodies, Ni<sup>2+</sup>, iminobiotin or glutathione. Resin- or MagBead-based purification methods significantly lower the possibility of cross-contamination and loss of proteins that are common if centrifugation or gravity precipitation methods are used. Purification using resins and beads is also less labor-intensive and time-consuming.

### >> Key Features:

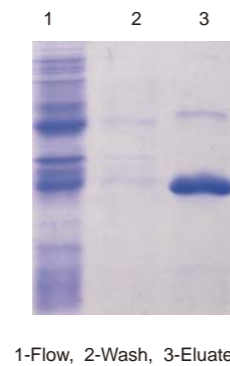
- Quick and Convenient Separation
- Minimal Loss of Target Protein
- Minimal Cross-Contamination
- High Binding Capacity

### >> Examples:

1. SDS-PAGE analysis of a protein purified using Protein A Resin from GenScript (L00210)



2. SDS-PAGE analysis of a protein purified using High-Affinity GST resin from GenScript (L00206)



### >> Product List:

| Cat. No. | Product Name                      | Size                     | Price                                |
|----------|-----------------------------------|--------------------------|--------------------------------------|
| L00206   | GST Resin                         | 1 Kit                    | \$ 98.00                             |
| L00210   | Protein A Resin                   | 5 ml                     | \$ 98.00                             |
| L00209   | Protein G Resin                   | 5 ml                     | \$ 129.00                            |
| L00239   | Protein L Resin                   | 2.5 ml                   | \$ 145.00                            |
| L00223   | Ni-IDA Resin                      | 10 ml<br>25 ml<br>500 ml | \$ 80.00<br>\$ 168.00<br>\$ 2,480.00 |
| L00272   | IminoBiotin Resin                 | 5 ml                     | \$ 118.00                            |
| L00275   | THE™ Anti-His mAb MagBeads        | 5 mg                     | \$ 197.00                            |
| L00295   | Ni-Charged Magnetic Beads         | 2 ml                     | \$ 98.00                             |
| L00273   | Protein A MagBeads                | 1 ml                     | \$ 89.00                             |
| L00274   | Protein G MagBeads                | 0.5 ml                   | \$ 125.00                            |
| L00277   | Protein A/G MagBeads              | 0.5 ml                   | \$ 148.00                            |
| L00328   | Goat Anti-Rabbit IgG Magbeads     | 1 ml                     | \$ 159.00                            |
| L00332   | Donkey Anti-Goat IgG MagBeads     | 1 ml                     | \$ 159.00                            |
| L00336   | Mouse Anti-GST mAb MagBeads       | 1 ml                     | \$ 159.00                            |
| L00337   | Mouse Anti-Trx mAb MagBeads       | 1 ml                     | \$ 159.00                            |
| MM00112  | 2-Tube Magnetic Separation Racks  | 1 EA                     | \$ 29.00                             |
| MM00113  | 12-Tube Magnetic Separation Racks | 1 EA                     | \$ 79.00                             |

## Protein Markers

### >> Description:

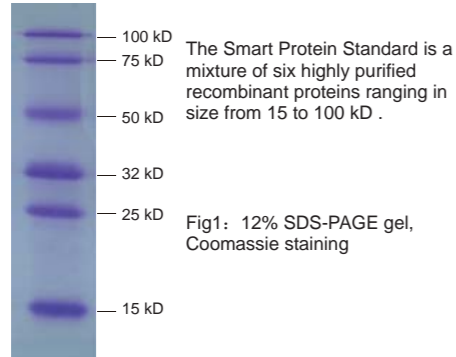
Protein molecular weight markers are used to estimate sample molecular weights, to monitor the progress of an electrophoretic run, and as a positive control for the electrophoresis and Western conditions. GenScript offers a wide selection of molecular weight markers for protein electrophoresis and Western blot applications, including unstained, prestained, peptide, Western-viewable, and other markers. All have been quality-controlled to assure consistent performance and are available in convenient package sizes.

### >> Key Features:

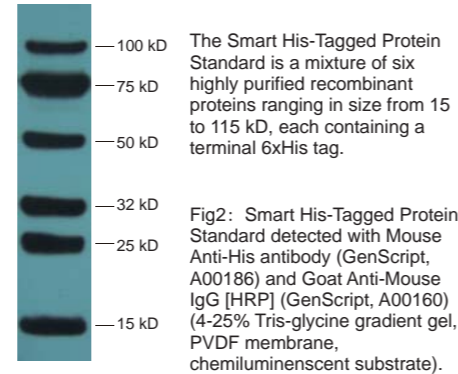
- **Comprehensive selection** — GenScript offers a variety of protein markers for different applications, including SDS-PAGE, Western blot, etc.
- **Direct visualization** — GenScript's EasyWestern Protein Marker allows direct visualization of the MW standard on Western blots (membrane, X-ray film, chemiluminescent imager).
- **Broad molecular weight range** — GenScript provides low-molecular weight, mid-range and high molecular weight markers to suit all practical needs.

### >> Examples:

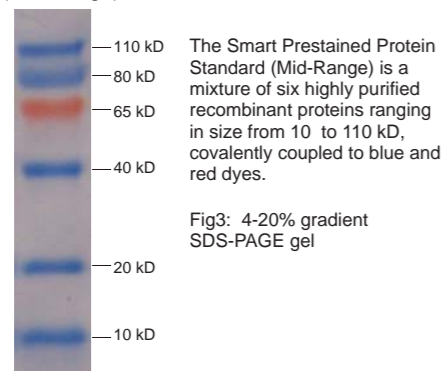
#### 1. Smart Protein Standard (Mid-Range)



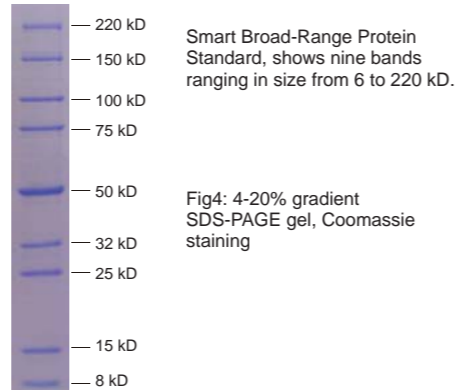
#### 2. Smart His-Tagged Protein Standard



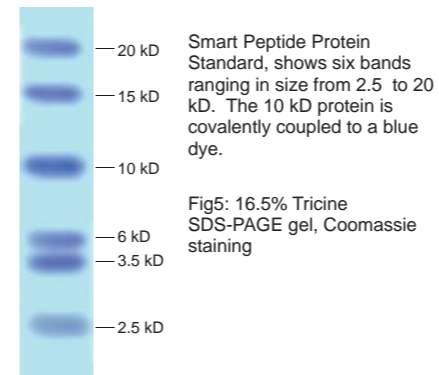
#### 3. Smart Prestained Protein Standard (Mid-Range)



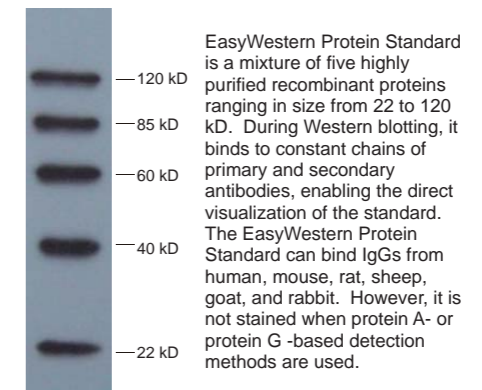
#### 4. Smart Broad-Range Protein Standard



#### 5. Smart Peptide Protein Standard



#### 6. EasyWestern Protein Standard



### >> Product List:

| Cat. No. | Product Name                                     | Size      | Price   |
|----------|--|-----------|---------|
| MM0900   | Smart Protein Standard (Middle-Range)            | 100 Lanes | \$49.00 |
| MM0904   | Smart His-tagged Protein Standard                | 100 Lanes | \$98.00 |
| MM0905   | Smart Prestained Protein Standard (Middle-Range) | 100 Lanes | \$95.00 |
| MM0906   | Smart Broad-Range Protein Standard               | 100 Lanes | \$58.00 |
| MM0907   | Smart Peptide Protein Standard                   | 50 Lanes  | \$58.00 |
| MM0908   | EasyWestern Protein Standard                     | 100 Lanes | \$68.00 |