

4. Sample loading.

You can use 10 μ l pipette tip to load samples into the wells easily. Make sure that the loading tip is inserted into the sample well vertically for optimum result and to avoid inserting the tip into the groove on the back plate.



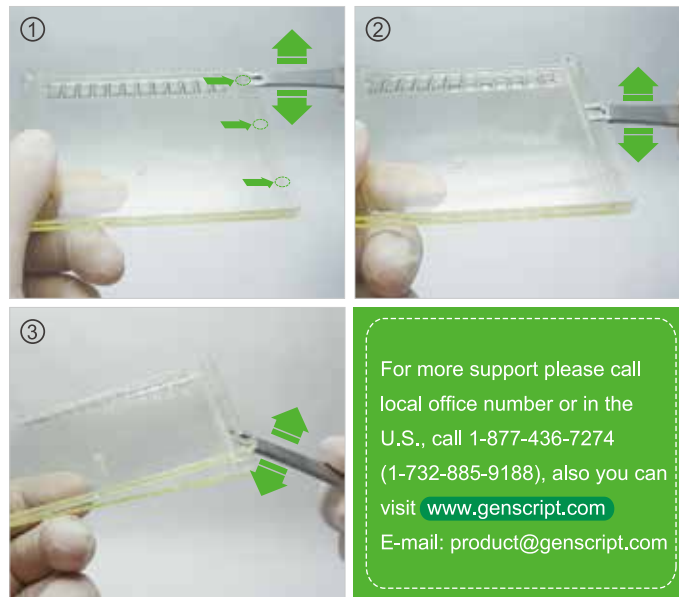
5. Running conditions.

Voltage	Started Current	Finished Current	Run Time per Gel
140 V	75-100 mA	30-50 mA	45-55 min

The running time may vary depending on your power supply and the gel percentage.

6. Open the cassette with an opener or a screw driver to remove the gel.

Stain your gel with GenScript's eStain L1 automatic Protein Staining System (L00657) and get high quality staining result in 10 min!



Open the cassette with GenScript's opener or a screw driver.

For more support please call local office number or in the U.S., call 1-877-436-7274 (1-732-885-9188), also you can visit www.genscript.com E-mail: product@genscript.com

Guide for using SurePage™ Gels, 10×8



1. Choose the appropriate gel for your protein electrophoresis based on the migration pattern below.

Wells	Max. Vol/well	8-16%	4-20%	4-12%	8%	10%	12%
10	80 μ l	270 KD 175 KD 130 KD	270 KD 175 KD 130 KD	270 KD 175 KD 130 KD	270 KD 175 KD 130 KD	270 KD 175 KD 130 KD	270 KD 175 KD 130 KD
12	60 μ l	95 KD 80 KD 65 KD 50 KD	95 KD 80 KD 65 KD 50 KD	95 KD 80 KD 65 KD 50 KD	95 KD 80 KD 65 KD 50 KD	95 KD 80 KD 65 KD 50 KD	95 KD 80 KD 65 KD 50 KD
15	40 μ l	40 KD 35 KD 30 KD 20 KD 15 KD 10 KD 5 KD	40 KD 35 KD 30 KD 20 KD 15 KD 10 KD 5 KD	40 KD 35 KD 30 KD 20 KD 15 KD 10 KD 5 KD	40 KD 35 KD 30 KD 20 KD 15 KD 10 KD 5 KD	40 KD 35 KD 30 KD 20 KD 15 KD 10 KD 5 KD	40 KD 35 KD 30 KD 20 KD 15 KD 10 KD 5 KD

**2. Prepare the gel tank.
Using MOPS (Cat No. M00138) or MES buffer as the running buffer.**

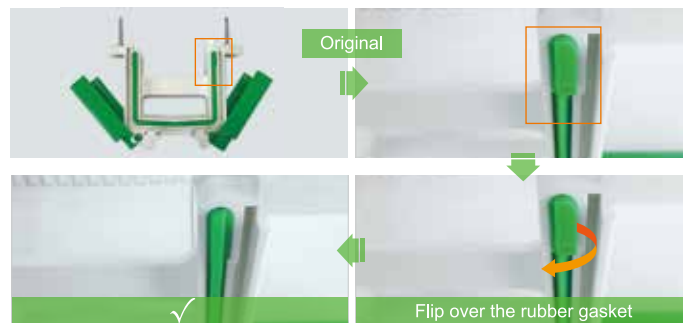
★ **Compatible gel tanks:**
Bio-Rad Mini-PROTEAN (II/ 3/ Tetra System)
Hoefer Mighty Small (SE 250/ SE 260)

Sample preparation:
Heat the sample at 70°C for 10 min, spin down the sample before loading.
We recommend using SurePAGE sample buffer (4X), see manual for detail.

3. Peel the tape at the bottom of the gel plate, remove the comb gently, then insert the gel into the gel running apparatus and add running buffer.



Turn around the gasket to fit the gel plate when using Bio-Rad's gel tanks ↓



Adapters provided in the gel package are needed since the thickness of SurePage cassette is thinner than that of Invitrogen NuPAGE gel cassette.

